

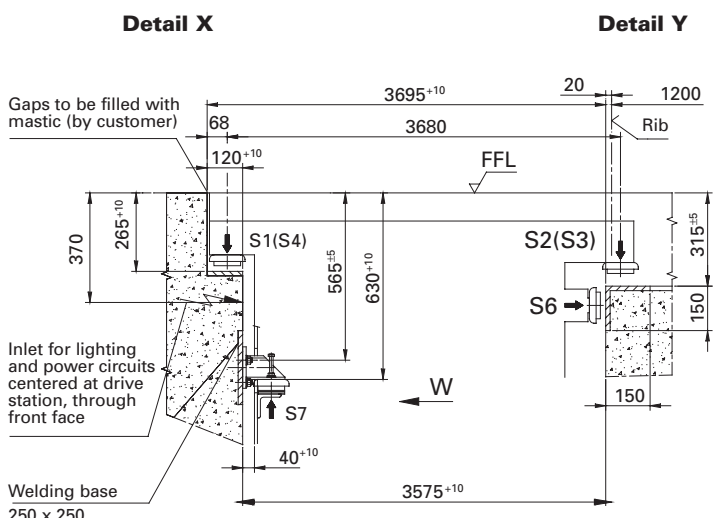
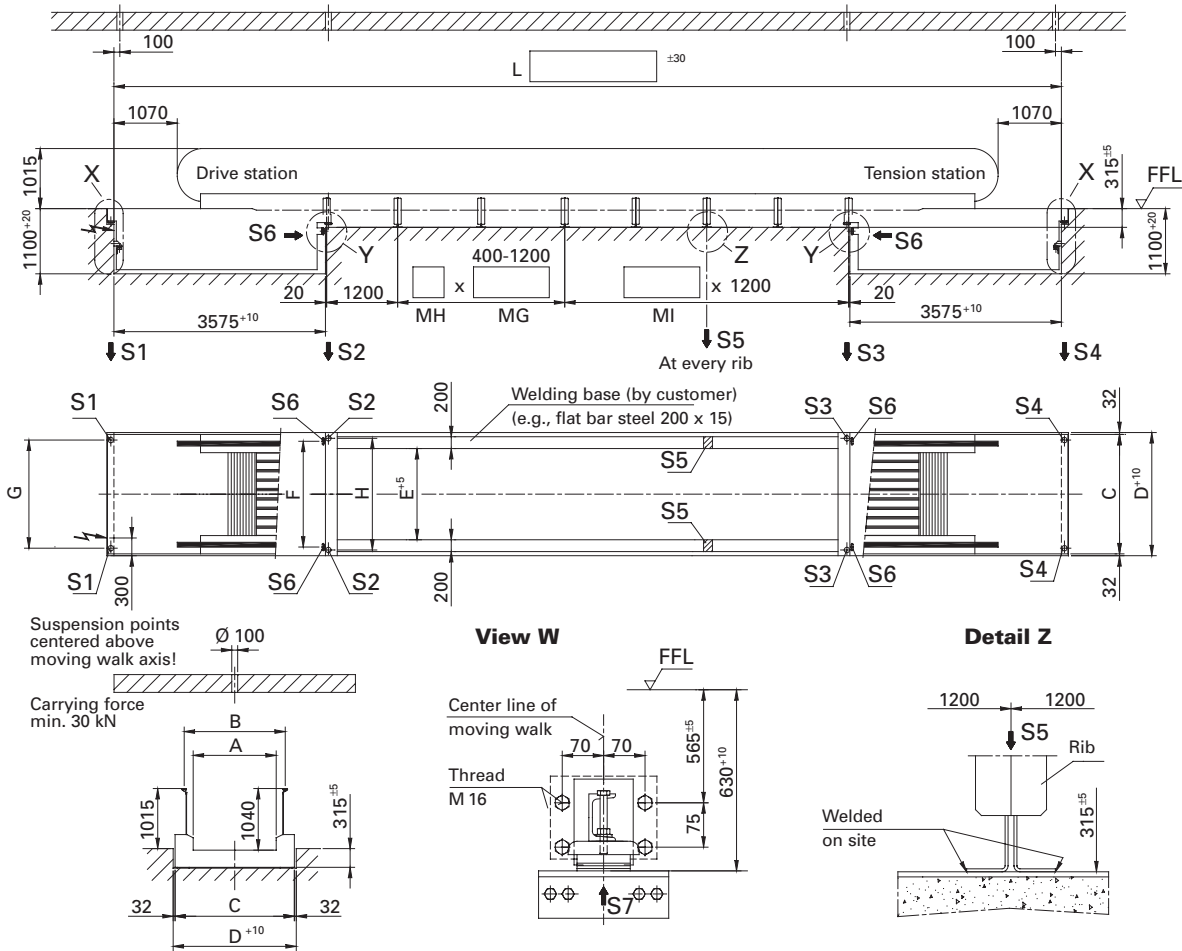
SCHINDLER 9500®

Type 55

Transportation length: max. 100 m
at an inclination of 0°
design P

Balustrade:
Balustrade height: 1000 mm

Truss in drive and tension stations
Inclination: 0°–6°
Rubber belt width: 1000/1200/1400 mm



Max. support loads (kN)

| Belt width | 1000 | 1200 | 1400 |
|------------|------|------|------|
| S1 | 9.0 | 10.0 | 11.0 |
| S2 | 14.0 | 15.0 | 16.0 |
| S3 | 14.0 | 15.0 | 16.0 |
| S4 | 9.0 | 10.0 | 11.0 |
| S5 | 5.0 | 5.5 | 6.0 |
| S6 | 36.0 | 36.0 | 36.0 |
| S7 | 10.0 | 10.0 | 10.0 |

Motor rating table¹⁾:
values for horizontal installation

| v (m/s) | 0.65 | | |
|---------|--------------------|------|------|
| A (mm) | 1000 | 1200 | 1400 |
| Rating | Maximum length (m) | | |
| 8 kW | 53 | 47 | 43 |
| 11 kW | 84 | 75 | 68 |

1) Motor ratings for other speeds on request.

All dimensions in mm.
All loads in kN.
Subject to changes.

Schindler

