

Schindler 9500™ Type 40 and Type 45

The High-Performance Moving Walk for Long Distances

Schindler 9500-40 and Schindler 9500-45 are specially designed for high-volume passenger transport over distances of up to 200 meters. They are ideal for airports, exhibition halls and congress centers, or to and from the parking lot. Easily accommodating as many as 13,500 passengers per hour, these units guarantee a safe, comfortable ride through extended passageways and across large interiors, as well as over lengthy outdoor stretches. With an inclination ranging from 0° to 6°, these moving walks are fully equipped to meet even the toughest requirements.

Extremely Flat Construction

The flat construction of Schindler 9500-45, which has no truss and is only 400 mm high in its central part, is a great advantage when space is at a premium.

The continuous truss of Schindler 9500-40, with a height of 550 mm, makes this model the right choice for installation on interrupted building foundations.

Exceptionally Economical

Unique Schindler solutions and the use of smart technology guarantee maximum operational cost-effectiveness and ease of maintenance.

Highly efficient drive technology, with a choice of automatic operation or variable-speed drive, provides unbeatable energy savings.



Airport Zaventem, Brussels, Belgium





Schindler

The Elevator and Escalator Company



Schindler 9500™

Horizontal Moving Walk

Type 40/45

Product Leaflet

Schindler 



The Technology in Detail

Long Service Life

The extremely stable pallets, with a depth of 400 mm, and the durable connection elements are built to withstand even the most punishing use.

The robust stainless steel balustrade and the solid, steel-reinforced newel end are virtually resistant to damage caused by carelessness or vandalism.

Wide Enough for Passing

The pallet width of 1,000 mm allows easy passing. With the pallet width of 1,400 mm, there is even sufficient space for passengers pushing luggage carts to pass each other.

Efficient Operation

As a standard feature Schindler 9500-40 and Schindler 9500-45 moving walks are equipped with a variable-speed drive, which includes the soft-start mode.

The automatic operation option in combination with installed scan sensors creates major energy savings. By allowing smooth deceleration instead of harsh braking, the soft-stop feature extends the life of the mechanical components.

The microprocessor controller MICONIC F provides long-distance data transmission, enabling unit supervision by building monitoring stations.

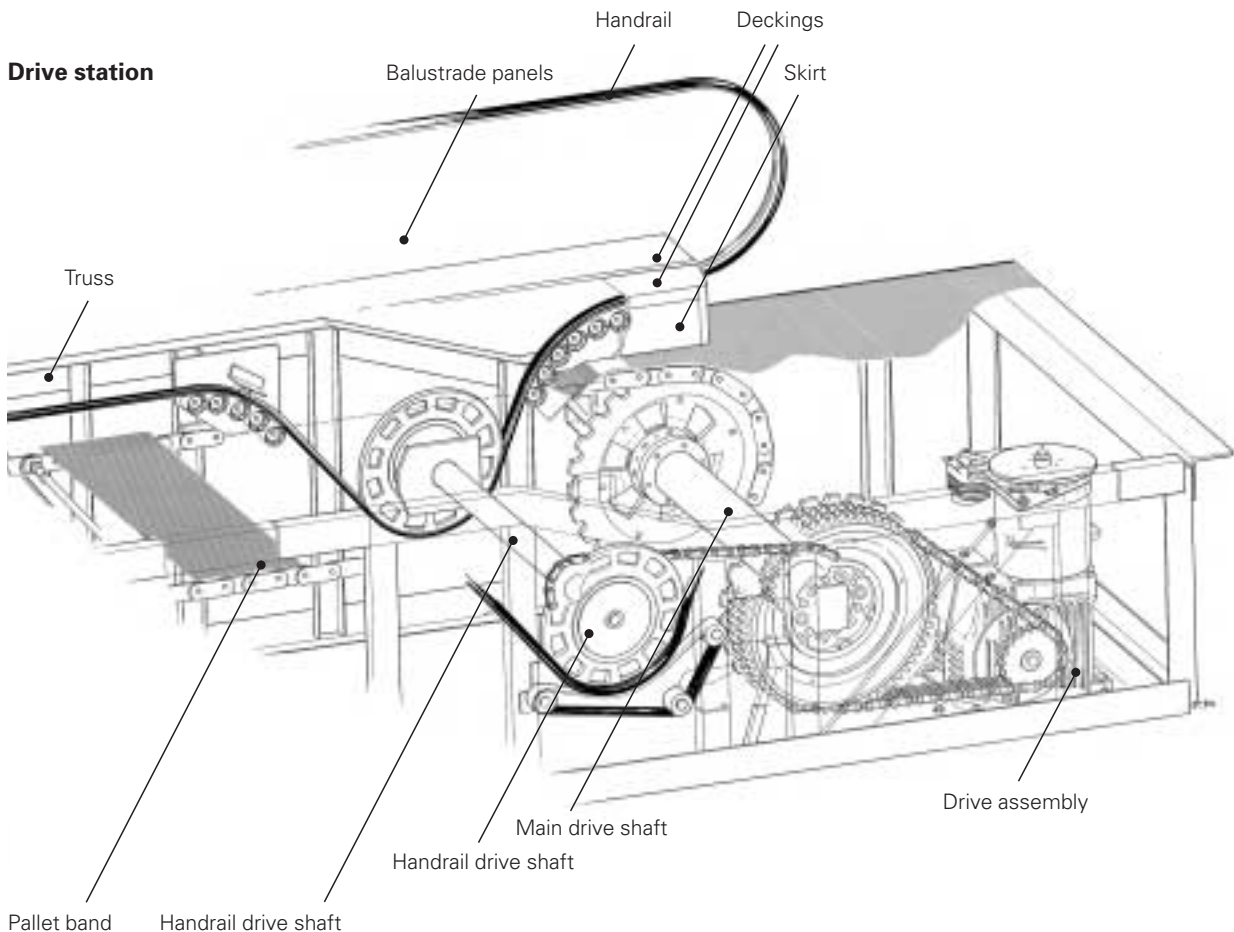


Steel-reinforced newel end



The microprocessor controller MICONIC F

Drive station



Individualized Planning

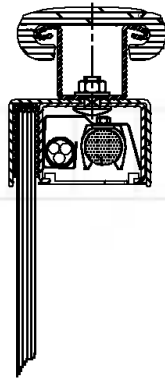
Versatility on Demand

With a broad range of finishes, materials and colors for every visible component, the appearance of these moving walks can be customized to suit any architectural requirements:

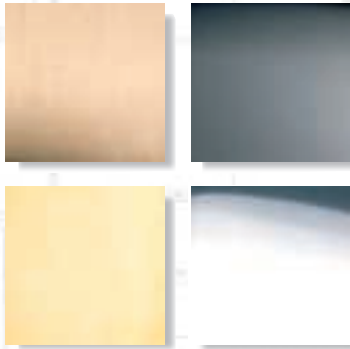
- Range of moving walk widths
- Floor covers available in stainless steel or ribbed aluminum
- Profiles and deckings available in stainless steel, brass or aluminum
- Optional balustrade lighting
- Wide choice of handrail colors
- Balustrade glass available in five colors
- Various cladding materials



Design P balustrade



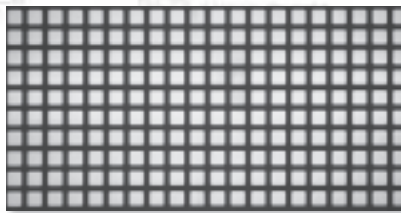
Optional balustrade lighting



Claddings and deckings come in various materials and finishes, including stainless steel and brass



Aluminum floor cover with black anodized grooves



Stainless steel floor cover with etched grid pattern



Balustrade glass in a choice of five colors

