



Schindler 7000

Planning parameters of high-rise elevators.



The journey to the top. From outline to skyline.

You and Schindler share the same objective: a well-elevated building, which ensures that people reach their destinations swiftly, comfortably and above all safely.

We are passionate about providing you with the very best achievable elevator system using our world class design skills and products.

You want to end up with a top Class project. That “Journey to the top” starts with Schindler’s innovation, reliability and product leadership.

Load		Speed	Travel height max.	Car	Door	Hoistway	Machine room	Overhead clearance	Pit depth	Reaction load				Motor	Power supply capacity (380 V – 415 V)								Starting power	Heat dissipation in machine room	
kg	Persons	m/s	m	BK x TK mm	BT x HT mm	BS x TS mm	BO x TO x HO mm	HSK mm	HSG mm	R1 kg	R2 kg	R3 kg	R4 kg	PME KW	1 Unit kVA	2 Unit kVA	3 Unit kVA	4 Unit kVA	5 Unit kVA	6 Unit kVA	7 Unit kVA	8 Unit kVA	kVA	KW	Kcal/h
900	12	2.5	125	1500 x 1400	900 x 2100	2100 x 2200	2200 x 4400 x 2300	HK+2400	2100	8800	5600	9000	5800	13.2	22.9	41.7	61.9	80.7	96.3	110.1	123.6	137.6	48	1.98	1683
				1550 x 1350		2100 x 2150	2200 x 4350 x 2300			8800	5600	9000	5800												
				1600 x 1300		2150 x 2100	2200 x 4300 x 2300			8800	5700	9000	5800												
				1600 x 1300	1000 x 2100	2300 x 2100	2300 x 4300 x 2300			8800	5700	9000	5800												
				1600 x 1350		2300 x 2150	2300 x 4350 x 2300			8900	5700	9100	5800												
				1600 x 1400		2300 x 2200	2300 x 4400 x 2300			8900	5700	9100	5900												
900	12	2.5	150	1500 x 1400	900 x 2100	2100 x 2200	2200 x 4400 x 2300	HK+2400	2800	10100	6400	13400	5900	15.1	25.7	46.8	69.4	90.5	108.0	123.4	138.5	154.2	54	2.27	1925
				1550 x 1350		2150 x 2150	2200 x 4350 x 2300			10100	6400	13400	5900												
				1600 x 1300		2200 x 2100	2250 x 4300 x 2300			10000	6500	13400	5900												
				1600 x 1300	1000 x 2100	2300 x 2100	2300 x 4300 x 2300			10100	6500	13400	5900												
				1600 x 1350		2300 x 2150	2300 x 4350 x 2300			10100	6500	13400	5900												
				1600 x 1400		2300 x 2200	2300 x 4400 x 2300			10200	6400	13500	6000												
900	12	3	180	1500 x 1400	900 x 2100	2100 x 2200	2200 x 4400 x 2300	HK+2400	2800	10300	6400	15100	5900	18.5	29.8	54.2	80.4	104.9	125.1	143.0	160.6	178.7	66	2.78	2359
				1550 x 1350		2150 x 2150	2200 x 4350 x 2300			10300	6400	15100	5900												
				1600 x 1300		2200 x 2100	2250 x 4300 x 2300			10200	6500	15100	6000												
				1600 x 1300	1000 x 2100	2300 x 2100	2300 x 4300 x 2300			10200	6500	15100	6000												
				1600 x 1350		2300 x 2150	2300 x 4350 x 2300			10300	6500	15100	6000												
				1600 x 1400		2300 x 2200	2300 x 4400 x 2300			10400	6500	15200	6000												
900	12	3.5	210	1500 x 1400	900 x 2100	2100 x 2250	2200 x 4450 x 2500	HK+2400	2900	11100	7100	17000	6100	21.1	32.4	59.0	87.5	114.1	136.2	155.6	174.8	194.5	71	3.17	2691
				1550 x 1350		2150 x 2200	2200 x 4400 x 2500			11100	7200	17000	6100												
				1600 x 1300		2200 x 2150	2250 x 4350 x 2500			11700	7600	17300	6200												
				1600 x 1300	1000 x 2100	2300 x 2150	2300 x 4350 x 2500			11000	7200	17000	6200												
				1600 x 1350		2300 x 2200	2300 x 4400 x 2500			11800	7600	17300	6200												
				1600 x 1400		2300 x 2250	2300 x 4450 x 2500			11700	7500	17300	6200												
900	12	4	240	1500 x 1400	900 x 2100	2100 x 2250	2200 x 4450 x 2500	HK+2700	3600	12000	7600	19100	6200	24.0	35.9	65.3	96.9	126.3	150.7	172.3	193.4	215.3	86	3.60	3060
				1550 x 1350		2150 x 2200	2200 x 4400 x 2500			11900	7700	19100	6200												
				1600 x 1300		2200 x 2150	2250 x 4350 x 2500			11900	7700	19100	6200												
				1600 x 1300	1000 x 2100	2300 x 2150	2300 x 4350 x 2500			11900	7700	19100	6200												
				1600 x 1350		2300 x 2200	2300 x 4400 x 2500			12000	7700	19100	6200												
				1600 x 1400		2300 x 2250	2300 x 4450 x 2500			12100	7700	19200	6300												
900	12	5	240	1500 x 1400	900 x 2100	2100 x 2250	2100 x 4450 x 3700	HK+2800	3600	24100	15400	19100	6200	32.3	48.1	87.5	129.8	169.2	201.9	230.8	259.2	288.5	106	2.26	1922
				1550 x 1350		2150 x 2200	2150 x 4400 x 3700			24100	15400	19100	6200												
				1600 x 1300		2200 x 2150	2200 x 4350 x 3700			24000	15500	19100	6200												
				1600 x 1300	1000 x 2100	2300 x 2150	2300 x 4350 x 3700			24000	15500	19100	6200												
				1600 x 1350		2300 x 2200	2300 x 4400 x 3700			24200	15500	19100	6200												
				1600 x 1400		2300 x 2250	2300 x 4450 x 3700			24400	15500	19200	6300												
900	12	6	240	1500 x 1400	900 x 2100	2100 x 2250	2100 x 4450 x 3700	HK+3100	3700	24100	15400	19100	6200	38.8	55.9	101.8	151.0	196.8	234.8	268.4	301.3	335.5	124	2.72	2309
				1550 x 1350		2150 x 2200	2150 x 4400 x 3700			24100	15400	19100	6200												
				1600 x 1300		2200 x 2150	2200 x 4350 x 3700			24000	15500	19100	6200												
				1600 x 1300	1000 x 2100	2300 x 2150	2300 x 4350 x 3700			24000	15600	19100	6200												
				1600 x 1350		2300 x 2200	2300 x 4400 x 3700			24200	15500	19100	6200												
				1600 x 1400		2300 x 2250	2300 x 4450 x 3700			24300	15500	19200	6300												





Load		Speed	Travel height max.	Car	Door	Hoistway	Machine room	Overhead clearance	Pit depth	Reaction load				Motor	Power supply capacity (380 V – 415 V)								Starting power	Heat dissipation in machine room	
kg	Persons	m/s	m	BK x TK mm	BT x HT mm	BS x TS mm	BO x TO x HO mm	HSK mm	HSG mm	R1 kg	R2 kg	R3 kg	R4 kg	PME KW	1 Unit kVA	2 Unit kVA	3 Unit kVA	4 Unit kVA	5 Unit kVA	6 Unit kVA	7 Unit kVA	8 Unit kVA	kVA	KW	Kcal/h
1000	13	2.5	125	1600 x 1400	900 x 2100	2200 x 2200	2250 x 4400 x 2300	HK+2400	2100	9500	6100	11700	6200	14.7	25.0	45.5	67.5	88.0	105.0	120.0	134.8	150.1	54	2.21	1874
				1600 x 1500		2200 x 2300	2250 x 4500 x 2300			9700	6100	11700	6200												
				1600 x 1400	1000 x 2100	2300 x 2200	2300 x 4400 x 2300			9500	6100	11700	6200												
				1600 x 1500		2300 x 2300	2300 x 4500 x 2300			9700	6100	11700	6200												
				1600 x 1400	1100 x 2100	2500 x 2200	2500 x 4400 x 2300			9600	6100	11700	6200												
				1600 x 1500		2500 x 2300	2500 x 4500 x 2300			9700	6100	11700	6300												
				1600 x 1550		2500 x 2350	2500 x 4550 x 2300			9800	6100	11700	6300												
1000	13	2.5	150	1600 x 1400	900 x 2100	2200 x 2200	2250 x 4400 x 2500	HK+2500	2800	10700	6900	13500	6200	16.5	26.9	48.9	72.6	94.6	112.9	129.0	144.9	161.3	52	2.48	2104
				1600 x 1500		2200 x 2300	2250 x 4500 x 2500			10900	6900	13500	6300												
				1600 x 1400	1000 x 2100	2300 x 2200	2300 x 4400 x 2500			10700	6900	13500	6300												
				1600 x 1500		2300 x 2300	2300 x 4500 x 2500			10900	6900	13500	6300												
				1600 x 1400	1100 x 2100	2500 x 2200	2500 x 4400 x 2500			10800	6900	13500	6300												
				1600 x 1500		2500 x 2300	2500 x 4500 x 2500			11000	6900	13500	6400												
				1600 x 1550		2500 x 2350	2500 x 4550 x 2500			11000	6900	13600	6400												
1000	13	3	180	1600 x 1400	900 x 2100	2200 x 2200	2250 x 4400 x 2500	HK+2400	2900	11900	7500	15600	6500	19.2	30.1	54.8	81.4	106.1	126.6	144.7	162.4	180.8	65	2.88	2448
				1600 x 1500		2200 x 2300	2250 x 4500 x 2500			12000	7500	15700	6600												
				1600 x 1400	1000 x 2100	2300 x 2200	2300 x 4400 x 2500			11900	7600	15600	6500												
				1600 x 1500		2300 x 2300	2300 x 4500 x 2500			12000	7500	15700	6600												
				1600 x 1400	1100 x 2100	2500 x 2200	2500 x 4400 x 2500			11900	7600	15600	6500												
				1600 x 1500		2500 x 2300	2500 x 4500 x 2500			12100	7600	15700	6600												
				1600 x 1550		2500 x 2350	2500 x 4550 x 2500			12200	7600	15700	6700												
1000	13	3.5	210	1600 x 1400	900 x 2100	2200 x 2250	2250 x 4450 x 2500	HK+2700	2900	12000	7800	17500	6500	22.8	34.5	62.8	93.2	121.4	144.9	165.6	186.0	207.0	78	3.42	2907
				1600 x 1500		2200 x 2350	2250 x 4550 x 2500			12200	7700	17500	6600												
				1600 x 1400	1000 x 2100	2300 x 2250	2300 x 4450 x 2500			12000	7800	17500	6500												
				1600 x 1500		2300 x 2350	2300 x 4550 x 2500			12200	7800	17500	6600												
				1600 x 1400	1100 x 2100	2500 x 2250	2500 x 4450 x 2500			12100	7800	17500	6600												
				1600 x 1500		2500 x 2350	2500 x 4550 x 2500			12300	7800	17600	6600												
				1600 x 1550		2500 x 2400	2500 x 4600 x 2500	HK+2800	12300	7800	17600	6700													
1000	13	4	240	1600 x 1400	900 x 2100	2200 x 2250	2250 x 4450 x 2500	HK+2700	3600	12400	8000	19300	6600	26.3	38.9	70.7	104.9	136.8	163.2	186.6	209.5	233.2	91	3.95	3354
				1600 x 1500		2200 x 2350	2250 x 4550 x 2500		3500	12600	8000	19400	6600												
				1600 x 1400	1000 x 2100	2300 x 2250	2300 x 4450 x 2500		3600	12400	8000	19400	6600												
				1600 x 1500		2300 x 2350	2300 x 4550 x 2500		3500	12600	8000	19400	6600												
				1600 x 1400	1100 x 2100	2500 x 2250	2500 x 4450 x 2500		3600	12400	8000	19400	6600												
				1600 x 1500		2500 x 2350	2500 x 4550 x 2500		3500	12600	8000	19400	6700												
				1600 x 1550		2500 x 2400	2500 x 4600 x 2500		3500	12700	8000	19400	6700												
1000	13	5	240	1600 x 1400	900 x 2100	2200 x 2250	2200 x 4450 x 3700	HK+2800	3600	25000	16100	19300	6600	35.2	51.9	94.4	140.1	182.7	217.9	249.1	279.7	311.3	113	2.46	2095
				1600 x 1500		2200 x 2350	2200 x 4550 x 3700		3500	25400	16000	19400	6600												
				1600 x 1400	1000 x 2100	2300 x 2250	2300 x 4450 x 3700		3600	25000	16100	19400	6600												
				1600 x 1500		2300 x 2350	2300 x 4550 x 3700		3500	25400	16100	19400	6600												
				1600 x 1400	1100 x 2100	2500 x 2250	2500 x 4450 x 3700		3600	25100	16100	19400	6600												
				1600 x 1500		2500 x 2350	2500 x 4550 x 3700		3500	25500	16100	19400	6700												
				1600 x 1550		2500 x 2400	2500 x 4600 x 3700		3500	25600	16100	19400	6700												





Load		Speed	Travel height max.	Car	Door	Hoistway	Machine room	Overhead clearance	Pit depth	Reaction load				Motor	Power supply capacity (380 V – 415 V)								Starting power	Heat dissipation in machine room			
kg	Persons	m/s	m	BK x TK mm	BT x HT mm	BS x TS mm	BO x TO x HO mm	HSK mm	HSG mm	R1 kg	R2 kg	R3 kg	R4 kg	PME KW	1 Unit kVA	2 Unit kVA	3 Unit kVA	4 Unit kVA	5 Unit kVA	6 Unit kVA	7 Unit kVA	8 Unit kVA	kVA	KW	Kcal/h		
1000	13	6	240	1600 x 1400	900 x 2100	2200 x 2250	2200 x 4450 x 3700	HK+3100	3700	25000	16100	19300	6600	42.2	60.3	109.8	162.9	212.4	253.4	289.6	325.2	362.1	134	2.95	2511		
				1600 x 1500		2200 x 2350	2200 x 4550 x 3700			25400	16100	19400	6600														
				1600 x 1400	1000 x 2100	2300 x 2250	2300 x 4450 x 3700			25000	16100	19400	6600														
				1600 x 1500		2300 x 2350	2300 x 4550 x 3700			25400	16100	19400	6600														
				1600 x 1400	1100 x 2100	2500 x 2250	2500 x 4450 x 3700			25100	16100	19400	6600														
				1600 x 1500		2500 x 2350	2500 x 4550 x 3700			25400	16100	19400	6700														
				1600 x 1550		2500 x 2400	2500 x 4600 x 3700			25600	16100	19400	6700														
1150	15	2.5	125	1950 x 1300	1000 x 2100	2550 x 2100	2550 x 4300 x 2500	HK+2400	2100	10400	6900	12000	6700	16.9	27.3	49.7	73.7	96.1	114.6	131.0	147.1	163.8	53	2.54	2155		
				1950 x 1400		2550 x 2200	2550 x 4400 x 2500			10600	6900	12000	6700														
				1950 x 1300	1100 x 2100	2550 x 2100	2550 x 4300 x 2500			10400	6900	12000	6700														
				1950 x 1400		2550 x 2200	2550 x 4400 x 2500			10600	6900	12000	6700														
1150	15	2.5	150	1950 x 1300	1000 x 2100	2550 x 2100	2550 x 4300 x 2500	HK+2400	2800	11800	7800	14100	6900	18.5	29.5	53.7	79.7	103.9	124.0	141.7	159.1	177.1	59	2.78	2359		
				1950 x 1400		2550 x 2200	2550 x 4400 x 2500			12000	7700	14100	7000														
				1950 x 1300	1100 x 2100	2550 x 2100	2550 x 4300 x 2500			11900	7800	14100	6900														
				1950 x 1400		2550 x 2200	2550 x 4400 x 2500			12000	7700	14100	7000														
1150	15	3	180	1950 x 1300	1000 x 2100	2550 x 2100	2550 x 4300 x 2500	HK+2400	2900	12400	8100	16000	7000	21.9	33.7	61.4	91.1	118.8	141.7	161.9	181.9	202.4	72	3.29	2793		
				1950 x 1400		2550 x 2200	2550 x 4400 x 2500			12500	8100	16000	7100														
				1950 x 1300	1100 x 2100	2550 x 2100	2550 x 4300 x 2500			12400	8100	16000	7000														
				1950 x 1400		2550 x 2200	2550 x 4400 x 2500			12600	8100	16000	7100														
1150	15	3.5	210	1950 x 1300	1000 x 2100	2550 x 2150	2550 x 4350 x 2500	HK+2400	2900	12700	8400	17800	7000	25.9	38.5	70.1	104.0	135.6	161.8	184.9	207.6	231.1	85	3.89	3303		
				1950 x 1400		2550 x 2250	2550 x 4450 x 2500			12900	8400	17900	7100														
				1950 x 1300	1100 x 2100	2550 x 2150	2550 x 4350 x 2500			12800	8400	17800	7100														
				1950 x 1400		2550 x 2250	2550 x 4450 x 2500			12900	8400	17900	7100														
1150	15	4	240	1950 x 1300	1000 x 2100	2550 x 2150	2550 x 4350 x 2500	HK+2700	3600	12900	8500	19700	7100	29.9	43.4	79.1	117.3	152.9	182.4	208.5	234.1	260.6	99	4.49	3813		
				1950 x 1400		2550 x 2250	2550 x 4450 x 2500			13100	8500	19700	7100														
				1950 x 1300	1100 x 2100	2550 x 2150	2550 x 4350 x 2500			12900	8500	19700	7100														
				1950 x 1400		2550 x 2250	2550 x 4450 x 2500			13100	8500	19700	7200														
1150	15	5	240	1950 x 1300	1000 x 2100	2550 x 2150	2550 x 4350 x 3700	HK+2800	3600	26000	17100	19700	7000	39.6	57.6	104.9	155.6	202.9	242.1	276.7	310.7	345.8	123	2.77	2356		
				1950 x 1400		2550 x 2250	2550 x 4450 x 3700			26300	17000	19700	7100														
				1950 x 1300	1100 x 2100	2550 x 2150	2550 x 4350 x 3700			26000	17100	19700	7100														
				1950 x 1400		2550 x 2250	2550 x 4450 x 3700			26400	17100	19700	7100														
1150	15	6	240	1950 x 1300	1000 x 2100	2550 x 2150	2550 x 4350 x 3700	HK+3100	3700	26000	17100	19700	7000	47.5	67.1	122.1	181.1	236.1	281.7	321.9	361.5	402.4	145	3.33	2827		
				1950 x 1400		2550 x 2250	2550 x 4450 x 3700			26300	17000	19700	7100														
				1950 x 1300	1100 x 2100	2550 x 2150	2550 x 4350 x 3700			26000	17100	19700	7100														
				1950 x 1400		2550 x 2250	2550 x 4450 x 3700			26400	17100	19700	7100														
1275	17	2.5	125	2000 x 1400	900 x 2100	2600 x 2200	2600 x 4400 x 2500	HK+2400	2100	11300	7400	12300	7100	18.7	29.7	54.1	80.2	104.6	124.8	142.7	160.2	178.3	58	2.81	2385		
		2.5	150						2800	12500	8100	14300	7300	20.4	32.0	58.3	86.4	112.7	134.4	153.6	172.5	192.0	63	3.06	2601		
		3	180						2900	13000	8400	16200	7400	24.1	36.7	66.8	99.1	129.2	154.2	176.2	197.9	220.3	76	3.62	3073		
		3.5	210						2600 x 2250	2600 x 4450 x 2500	14000	9100	18300	7500	28.0	41.3	75.1	111.5	145.3	173.4	198.2	222.6	247.7	93	4.20	3570	
		4	240						HK+2700	3600	14100	9200	20200	7500	32.3	44.8	81.6	121.0	157.8	188.3	215.2	241.6	268.9	105	2.26	1922	
		5							2600 x 4450 x 3700	HK+2800		27200	17700	19900	7500	43.2	62.5	113.7	168.7	220.0	262.5	300.0	336.8	374.9	133	3.02	2571
		6								HK+3100	3700	27200	17700	19900	7500	51.9	73.0	132.8	197.0	256.8	306.4	350.2	393.2	437.7	155	3.63	3088





Load		Speed	Travel height max.	Car	Door	Hoistway	Machine room	Overhead clearance	Pit depth	Reaction load				Motor	Power supply capacity (380 V – 415 V)								Starting power	Heat dissipation in machine room	
kg	Persons	m/s	m	BK x TK mm	BT x HT mm	BS x TS mm	BO x TO x HO mm	HSK mm	HSG mm	R1 kg	R2 kg	R3 kg	R4 kg	PME KW	1 Unit kVA	2 Unit kVA	3 Unit kVA	4 Unit kVA	5 Unit kVA	6 Unit kVA	7 Unit kVA	8 Unit kVA	kVA	KW	Kcal/h
1350	18	2.5	125	1950 x 1500	1100 x 2100	2550 x 2300	2550 x 4500 x 2500	HK+2400	2300	11700	7600	12400	7400	19.8	31.2	56.9	84.4	110.0	131.2	150.0	168.4	187.5	61	2.97	2525
				2000 x 1550	1200 x 2100	2600 x 2350	2600 x 4550 x 2500			11900	7600	12500	7500												
				1950 x 1500		2700 x 2300	2700 x 4500 x 2500			11800	7600	12400	7400												
				2000 x 1550		2700 x 2350	2700 x 4550 x 2500			11900	7600	12500	7500												
1350	18	2.5	150	1950 x 1500	1100 x 2100	2550 x 2300	2550 x 4500 x 2500	HK+2400	2800	12700	8100	14400	7500	21.5	33.5	61.0	90.5	118.0	140.8	161.0	180.7	201.2	65	3.23	2742
				2000 x 1550	1200 x 2100	2600 x 2350	2600 x 4550 x 2500			12900	8200	14500	7600												
				1950 x 1500		2700 x 2300	2700 x 4500 x 2500			12800	8200	14400	7500												
				2000 x 1550		2700 x 2350	2700 x 4550 x 2500			12900	8200	14500	7600												
1350	18	3	180	1950 x 1500	1100 x 2100	2550 x 2300	2550 x 4500 x 2500	HK+2400	2900	13300	8500	16300	7600	25.5	38.5	70.0	103.8	135.3	161.5	184.6	207.2	230.7	79	3.83	3252
				2000 x 1550	1200 x 2100	2600 x 2350	2600 x 4550 x 2500			13400	8500	16400	7700												
				1950 x 1500		2700 x 2300	2700 x 4500 x 2500			13300	8500	16400	7600												
				2000 x 1550		2700 x 2350	2700 x 4550 x 2500			13400	8500	16400	7700												
1350	18	3.5	210	1950 x 1500	1100 x 2100	2550 x 2350	2550 x 4550 x 2500	HK+2400	2900	14000	9000	18400	7600	29.6	43.4	78.9	117.1	152.7	182.2	208.2	233.8	260.2	96	4.44	3774
				2000 x 1550	1200 x 2100	2600 x 2400	2600 x 4600 x 2500			14100	9000	18500	7700												
				1950 x 1500		2700 x 2350	2700 x 4550 x 2500			14000	9000	18400	7600												
				2000 x 1550		2700 x 2400	2700 x 4600 x 2500			14100	9000	18500	7700												
1350	18	4	240	1950 x 1500	1100 x 2100	2550 x 2350	2550 x 4550 x 2500	HK+2700	3500	14400	9300	20300	7700	34.1	47.1	85.7	127.2	165.8	197.9	226.1	253.9	282.7	109	2.39	2029
				2000 x 1550	1200 x 2100	2600 x 2400	2600 x 4600 x 2500			14600	9300	20400	7700												
				1950 x 1500		2700 x 2350	2700 x 4550 x 2500			14400	9300	20300	7700												
				2000 x 1550		2700 x 2400	2700 x 4600 x 2500			14600	9300	20400	7800												
1350	18	5	240	1950 x 1500	1100 x 2100	2550 x 2350	2550 x 4550 x 3700	HK+2800	3500	27800	17900	20000	7600	45.4	65.4	119.0	176.6	230.2	274.7	313.9	352.5	392.4	138	3.18	2702
				2000 x 1550	1200 x 2100	2600 x 2400	2600 x 4600 x 3700			28000	17900	20100	7700												
				1950 x 1500		2700 x 2350	2700 x 4550 x 3700			27800	17900	20100	7600												
				2000 x 1550		2700 x 2400	2700 x 4600 x 3700			28100	17900	20100	7700												
1350	18	6	240	1950 x 1500	1100 x 2100	2550 x 2350	2550 x 4550 x 3700	HK+3100	3700	27800	17900	20000	7600	54.5	76.4	139.1	206.3	269.0	320.9	366.8	411.9	458.5	161	3.82	3243
				2000 x 1550	1200 x 2100	2600 x 2400	2600 x 4600 x 3700			28000	17900	20100	7700												
				1950 x 1500		2700 x 2350	2700 x 4550 x 3700			27800	17900	20100	7600												
				2000 x 1550		2700 x 2400	2700 x 4600 x 3700			28100	17900	20100	7700												
1600	21	2.5	125	2000 x 1700	1100 x 2100	2600 x 2500	2600 x 4700 x 2500	HK+2400	2300	12800	8100	12900	8100	23.5	36.3	66.1	98.0	127.8	152.5	174.3	195.7	217.8	69	3.53	2997
				2050 x 1750	1200 x 2100	2650 x 2550	2650 x 4750 x 2500			12900	8100	13000	8200												
				2000 x 1700		2700 x 2500	2700 x 4700 x 2500			12800	8100	12900	8100												
				2050 x 1750		2700 x 2550	2700 x 4750 x 2500			12900	8100	13000	8200												
1600	21	2.5	150	2000 x 1700	1100 x 2100	2600 x 2500	2600 x 4700 x 2500	HK+2400	2900	14300	8900	15100	8200	25.0	38.6	70.2	104.2	135.8	162.1	185.2	208.0	231.5	75	3.75	3188
				2050 x 1750	1200 x 2100	2650 x 2550	2650 x 4750 x 2500			14400	8900	15100	8300												
				2000 x 1700		2700 x 2500	2700 x 4700 x 2500			14300	8900	15100	8200												
				2050 x 1750		2700 x 2550	2700 x 4750 x 2500			14500	9000	15100	8300												
1600	21	3	180	2000 x 1700	1100 x 2100	2600 x 2500	2600 x 4700 x 2500	HK+2400	2900	15300	9500	17200	8600	29.6	44.1	80.2	119.0	155.1	185.1	211.5	237.5	264.4	92	4.44	3774
				2050 x 1750	1200 x 2100	2650 x 2550	2650 x 4750 x 2500			15400	9500	17200	8700												
				2000 x 1700		2700 x 2500	2700 x 4700 x 2500			15300	9500	17200	8600												
				2050 x 1750		2700 x 2550	2700 x 4750 x 2500			15500	9500	17200	8700												

Schindler se reserva el derecho de modificar las especificaciones, opciones y datos técnicos. Todas las ilustraciones son a título representativo.





Load		Speed	Travel height max.	Car	Door	Hoistway	Machine room	Overhead clearance	Pit depth	Reaction load				Motor	Power supply capacity (380 V – 415 V)								Starting power	Heat dissipation in machine room	
kg	Persons	m/s	m	BK x TK mm	BT x HT mm	BS x TS mm	BO x TO x HO mm	HSK mm	HSG mm	R1 kg	R2 kg	R3 kg	R4 kg	PME KW	1 Unit kVA	2 Unit kVA	3 Unit kVA	4 Unit kVA	5 Unit kVA	6 Unit kVA	7 Unit kVA	8 Unit kVA	kVA	KW	Kcal/h
1600	21	3.5	210	2000 x 1700	1100 x 2100	2600 x 2550	2600 x 4750 x 2500	HK+2400	2900	15400	9700	19100	8600	34.8	48.6	88.4	131.1	170.9	204.0	233.1	261.8	291.4	105	2.44	2071
				2050 x 1750		2650 x 2600	2650 x 4800 x 2500			15500	9700	19100	8700												
				2000 x 1700	1200 x 2100	2700 x 2550	2700 x 4750 x 2500			15400	9700	19100	8600												
				2050 x 1750		2700 x 2600	2700 x 4800 x 2500			15600	9700	19100	8700												
1600	21	4	240	2000 x 1700	1100 x 2100	2600 x 2550	2600 x 4750 x 3700	HK+2700	3500	18800	12000	21400	9000	42.9	60.9	110.8	164.4	214.4	255.8	292.3	328.2	365.4	139	3.00	2553
				2050 x 1750		2650 x 2600	2650 x 4800 x 3700			19000	12100	21400	9100												
				2000 x 1700	1200 x 2100	2700 x 2550	2700 x 4750 x 3700			18800	12000	21400	9000												
				2050 x 1750		2700 x 2600	2700 x 4800 x 3700			19000	12100	21400	9100												
1600	21	5	240	2000 x 1700	1100 x 2100	2600 x 2550	2600 x 4750 x 3700	HK+2800	3500	31800	19900	20900	8600	52.7	75.4	137.3	203.7	265.6	316.9	362.1	406.7	452.7	162	3.69	3136
				2050 x 1750		2650 x 2600	2650 x 4800 x 3700			32100	20000	21000	8700												
				2000 x 1700	1200 x 2100	2700 x 2550	2700 x 4750 x 3700			31800	19900	20900	8700												
				2050 x 1750		2700 x 2600	2700 x 4800 x 3700			32100	20000	21000	8700												
1600	21	6	240	2000 x 1700	1100 x 2100	2600 x 2550	2600 x 4750 x 3700	HK+3100	3700	31800	19900	20900	8600	63.2	88.1	160.3	237.7	310.0	369.8	422.7	474.6	528.3	189	4.42	3761
				2050 x 1750		2650 x 2600	2650 x 4800 x 3700			32100	20000	21000	8700												
				2000 x 1700	1200 x 2100	2700 x 2550	2700 x 4750 x 3700			31800	19900	20900	8700												
				2050 x 1750		2700 x 2600	2700 x 4800 x 3700			32100	20000	21000	8700												
1800	24	2.5	125	2100 x 1750	1100 x 2100	2700 x 2550	2700 x 4750 x 2500	HK+2400	2300	13900	8800	13300	8700	26.4	40.6	73.9	109.6	142.9	170.5	194.9	218.8	243.6	78	3.96	3366
				2150 x 1800		2750 x 2600	2750 x 4800 x 2500			14000	8800	13400	8800												
				2100 x 1750	1200 x 2100	2700 x 2550	2700 x 4750 x 2500			13900	8800	13300	8700												
				2150 x 1800		2750 x 2600	2750 x 4800 x 2500			14100	8800	13400	8800												
1800	24	2.5	150	2100 x 1750	1100 x 2100	2700 x 2550	2700 x 4750 x 2500	HK+2400	2800	15500	9600	15600	9100	28.0	42.7	77.8	115.4	150.5	179.5	205.2	230.4	256.5	84	4.20	3570
				2150 x 1800		2750 x 2600	2750 x 4800 x 2500			15600	9600	15700	9200												
				2100 x 1750	1200 x 2100	2700 x 2550	2700 x 4750 x 2500			15500	9600	15600	9200												
				2150 x 1800		2750 x 2600	2750 x 4800 x 2500			15600	9700	15700	9200												
1800	24	3	180	2100 x 1750	1100 x 2100	2700 x 2550	2700 x 4750 x 3700	HK+2500	3000	19200	12100	17900	9600	34.8	51.0	92.8	137.7	179.5	214.2	244.8	274.8	305.9	106	2.44	2071
				2150 x 1800		2750 x 2600	2750 x 4800 x 3700			19300	12100	18000	9600												
				2100 x 1750	1200 x 2100	2700 x 2550	2700 x 4750 x 3700			19200	12100	17900	9600												
				2150 x 1800		2750 x 2600	2750 x 4800 x 3700			19300	12100	18000	9700												
1800	24	3.5	210	2100 x 1750	1100 x 2100	2700 x 2600	2700 x 4800 x 3700	HK+2500	3000	19100	12200	19900	9600	41.1	58.7	106.9	158.6	206.8	246.7	282.0	316.7	352.5	127	2.88	2446
				2150 x 1800		2750 x 2650	2750 x 4850 x 3700			19300	12300	19900	9700												
				2100 x 1750	1200 x 2100	2700 x 2600	2700 x 4800 x 3700			19100	12300	19900	9600												
				2150 x 1800		2750 x 2650	2750 x 4850 x 3700			19300	12300	19900	9700												
1800	24	4	240	2100 x 1750	1100 x 2100	2700 x 2600	2700 x 4800 x 3700	HK+2700	3500	19600	12500	21800	9600	47.6	66.6	121.3	179.9	234.6	279.9	319.9	359.2	399.9	148	3.33	2833
				2150 x 1800		2750 x 2650	2750 x 4850 x 3700			19800	12600	21800	9700												
				2100 x 1750	1200 x 2100	2700 x 2600	2700 x 4800 x 3700			19600	12600	21800	9600												
				2150 x 1800		2750 x 2650	2750 x 4850 x 3700			19800	12600	21800	9700												
1800	24	5	240	2100 x 1750	1100 x 2100	2700 x 2600	2700 x 4800 x 4000	HK+2800	3500	35100	21800	21300	9300	54.0	75.9	138.1	204.8	267.0	318.6	364.1	408.9	455.2	165	3.78	3213
				2150 x 1800		2750 x 2650	2750 x 4850 x 4000			35400	21900	21400	9300												
				2100 x 1750	1200 x 2100	2700 x 2600	2700 x 4800 x 4000			35200	21800	21300	9300												
				2150 x 1800		2750 x 2650	2750 x 4850 x 4000			35500	21900	21400	9400												



Load		Speed	Travel height max.	Car	Door	Hoistway	Machine room	Overhead clearance	Pit depth	Reaction load				Motor	Power supply capacity (380 V – 415 V)								Starting power	Heat dissipation in machine room															
kg	Persons	m/s	m	BK x TK mm	BT x HT mm	BS x TS mm	BO x TO x HO mm	HSK mm	HSG mm	R1 kg	R2 kg	R3 kg	R4 kg	PME KW	1 Unit kVA	2 Unit kVA	3 Unit kVA	4 Unit kVA	5 Unit kVA	6 Unit kVA	7 Unit kVA	8 Unit kVA	kVA	KW	Kcal/h														
1800	24	6	240	2100 x 1750	1100 x 2100	2700 x 2600	2700 x 4800 x 4000	HK+3200	3700	35100	21800	21300	9300	64.8	88.8	161.6	239.8	312.6	373.0	426.3	478.7	532.9	194	4.54	3856														
				2150 x 1800		2750 x 2650	2750 x 4850 x 4000			35400	21900	21400	9300																										
				2100 x 1750	1200 x 2100	2700 x 2600	2700 x 4800 x 4000			35200	21800	21300	9300																										
				2150 x 1800		2750 x 2650	2750 x 4850 x 4000			35400	21900	21400	9400																										
2000	26	2.5	125	2350 x 1700	1100 x 2100	2950 x 2500	2950 x 4700 x 2500	HK+2400	2200	14700	9400	13800	9400	29.4	44.8	81.5	120.8	157.5	188.0	214.8	241.2	268.5	85	4.41	3749														
							2950 x 4700 x 3700		2800	18600	11900	16100	9600													31.1	48.0	87.4	129.6	169.0	201.6	230.5	258.8	288.1	93	4.67	3966		
									HK+2500	3000	19700	12500	18200													10000	38.3	55.4	100.9	149.6	195.1	232.8	266.0	298.7	332.5	113	2.68	2279	
							2950 x 2550			2950 x 4750 x 3700		20200	13000													20200	10000	45.3	63.9	116.3	172.5	224.8	268.3	306.6	344.3	383.3	134	3.17	2696
										HK+2700	3500	20100	13000													22100	10100	52.4	72.4	131.8	195.5	254.8	304.1	347.5	390.2	434.4	157	3.67	3118
									2950 x 4750 x 4000		HK+2800		39000													24500	22300	10000	64.3	89.7	163.3	242.2	315.8	376.8	430.6	483.6	538.3	192	4.50
										HK+3200		3600	39000													24500	22300	10000	77.2	105.0	191.0	283.4	369.5	440.8	503.8	565.7	629.8	225	5.40

In compliance with codes: EN81-1 1998, GB7588-2003

Remarks

Overall

- Hoistway width and depth dimensions are based on clear dimensions with horizontal building tolerances of ± 30 mm (for travel height up to 240 m) or ± 25 mm (for travel height up to 80 m)
- Figures with shaded backgrounds are in compliance with EN81-1 1998
- Indicated car sizes are most common. For different sizes, please contact our local sales office
- BK / TK are structural car widths and depths
- HK are structural car heights of 2400 mm – 3200 mm

- The indicated hoistway and machine room sizes are standard sizes without safety gear on counterweight
- The indicated machine room height HO includes a hoisting beam
- Minimal floor distance = HT + 500 mm (based on V50 doors)
- Standard car header distance (HK-HT) is between 200 mm and 1100 mm (based on V50 doors)
- For maximal car and door heights (HK / HT), we recommend the usual application range
- Roping: for speeds from 2.5 m/s – 4 m/s = 2:1, for speeds from 5 m/s to 6 m/s = 1:1
- All given information is for general reference and planning. For special

construction and code regulation details, please contact our local sales office

Overhead clearance and pit depth

- For smaller overhead clearance and pit depth, please contact our local sales office

Power supply

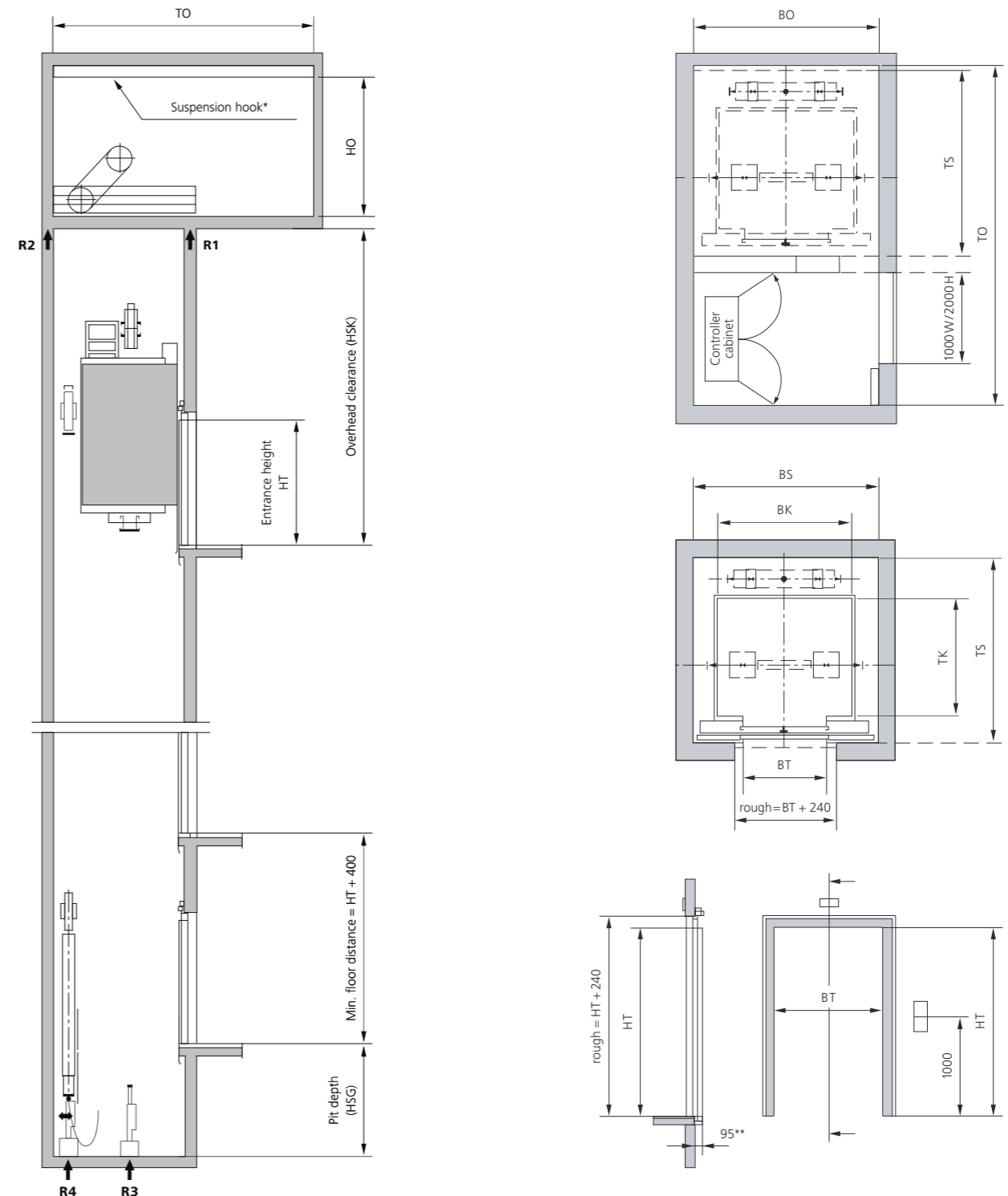
- Power supply wiring for lighting: single phase, neutral, earth (to be in accordance with national code requirements)
- Power supply wiring for ACVVVF drive: 3-phase, neutral, earth or 3-phase, earth (to be in accordance with national code requirements)
- Main frequency 50 Hz or 60 Hz

Heat dissipation in hoistway and machine room

- Our equipment is designed to withstand a temperature range of 5 to 40 degrees Celsius
- For the service personnel, the machine room and hoistway temperature should be kept within the range of 5 and 35 degrees Celsius
- The humidity in the machine room should not exceed a monthly average of 90% and a daily average of 98% without condensation



Hoistway and machine room sample layout



Disclaimer

The specifications, options and colors expressed within this brochure are indicative only and are subject to change without notice. They are not intended to, and do not, constitute an offer on the part of the Schindler Group.

HT = Entrance height

* By building contractors

** 95 mm for pocket sill support & 100 mm min. for pocketless sill support