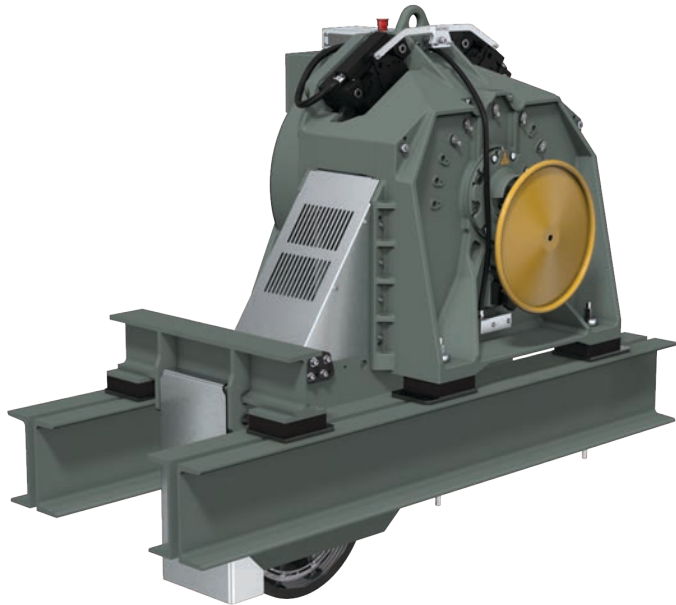


PMR 390 Modular Gearless Machine

For high-rise elevators



Schindler modular gearless machines are specifically designed to simplify installation in existing machine rooms, while maintaining optimized ride quality. They can be disassembled at the job site and then reassembled in the machine room.

Their compact design and minimum dimensions can normally fit through standard machine room doors. Dimensions are optimized so that they are compatible with corresponding hoistway dimensions.

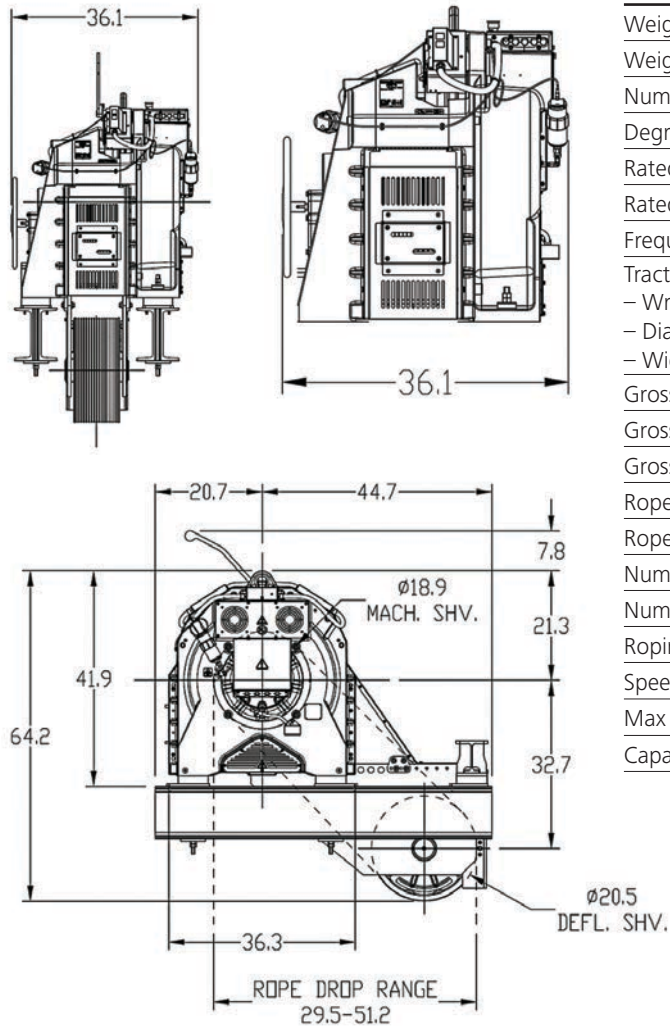
The machines are factory tested and delivered fully assembled to the job site, including the machine frame and leveling units, reducing installation time. The secondary sheave is delivered separately.



Modular Gearless Machines

For high-rise elevators

Dimensions

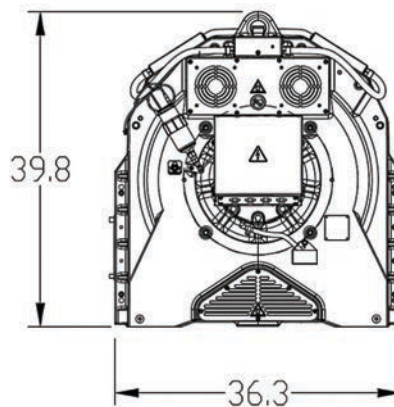


ALL DIMENSIONS ARE IN INCHES

Characteristics

PMR 390 gearless machine

Weight with secondary sheave	3,616 lbs.
Weight without secondary sheave	2,800 lbs.
Number of starts per hour (duty rating)	180
Degree of protection	IP21
Rated motor output	Max 60.4 kW
Rated voltage of motor	340 / 460 V
Frequency	50 / 60 Hz
Traction sheave	
– Wrapping	double
– Diameter	18.9 in
– Width	8.9 in
Gross height	64.2 in
Gross width	36.1 in
Gross depth	36.3 in
Rope diameter	11 mm
Rope drop	29.5" - 51.2"
Number of ropes	Max 8
Number of grooves	16
Roping	2:1
Speed	450 – 900 fpm (Lower speeds available)
Max Travel	Max. 590 ft.
Capacity	Up to 4,000 lbs.



For further information including location of the Schindler office nearest you, please visit:
www.us.schindler.com

North American Headquarters
 Morristown, New Jersey 07962-1935
 Tel. 973.397.6500



Schindler is a member organization of the U.S. Green Building Council.



Schindler has received renewal to ISO 14001:2004 and ISO 9001:2000 certificates.

ISO 9001 - ISO 14001



Schindler prints with vegetable-based ink on paper containing post-consumer waste fiber.



Mixed Sources
 Product group from well-managed forests, controlled sources and recycled wood or fiber.
www.fsc.org Cert no. SBC-COC-00547
 ©1996 Forest Stewardship Council