

Schindler Lobby Vision®

Supervisory monitoring system for elevator and escalator installations

Lobby Vision® is the latest and third generation of Schindler monitoring application, which is a PC-based interactive system with a contemporary graphical user interface. Lobby Vision allows the monitoring of all elevators and escalators in a building and/or in groups of buildings (e.g. on a campus).

Highlights at a glance:

- Capability to handle multiple buildings individually
- Campus view to monitor overall status
- State of the art user interface with zoom in/out capabilities, as well as detailed floor plans if needed
- Fast, detailed statistics moreover one year of historical data
- Replay mode at any point in time within historical data
- High scalability: from single-PC to multiple-PCs if needed
- Online-Help is PDF based and allowing easy printing.

Main functions

Wide range of control and information facilities:

- Supervision of elevators/escalators
- Elevator/escalator service switching
- Recording of operation and performance data for performance statistics

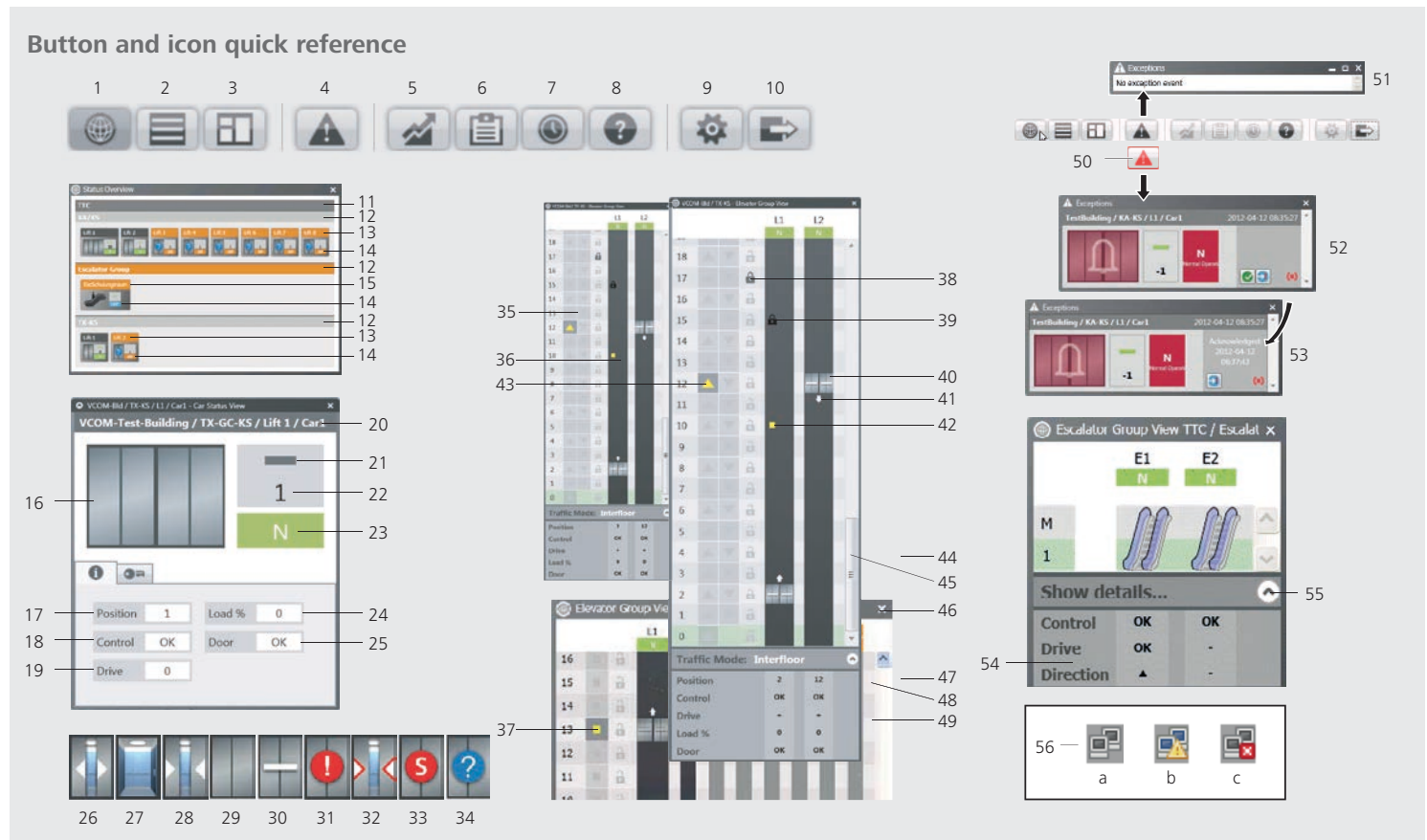
Application range

Combination with Schindler elevator controls	Miconic NX
	Miconic TX
	Schindler ID
	Miconic HX
	Port Technology
Combination with Schindler escalator controls	Miconic F



Schindler Lobby Vision®

Supervisory monitoring system for elevator and escalator installations



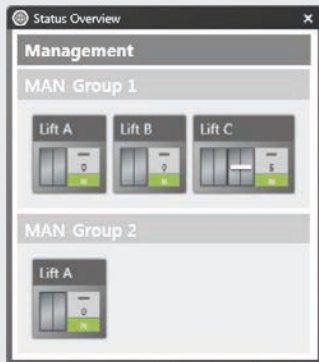
- | | | |
|-------------------------------------|--|---|
| 1 Status view | 24 Car position | 46 Additional info panel |
| 2 Floor view | 25 Door state | 47 Click to collapse/expand customer state panel |
| 3 Building complex view | 26 Door opening | 48 State panel for customer group |
| 4 Exception view | 27 Door open | 49 State panel for customer units |
| 5 Statistics view | 28 Door closing | 50 Button „Exception View“ indicating an exception |
| 6 Event log view | 29 Door closed | 51 Window „Exceptions“ indicating no exception |
| 7 Scheduler view | 30 Door locked | 52 Window „Exceptions“ indicating an exception |
| 8 PDF Help | 31 Door error | 53 Window „Exceptions“ indicating an acknowledged exception (alarm condition still present) |
| 9 Configuration tool | 32 Door nudging | 54 Status information table (collapsible) |
| 10 Login/Logout | 33 Door stop | 55 Expand/collapse chevron |
| 11 Building name bar | 34 Door state unknown | 56 a: Status: All connections OK |
| 12 Group name bar | 35 Pending boarding call | b: Status: Connection(s) to communication adapter(s) down |
| 13 Elevator name bar | 36 Pending destination call | c: Status: Connection to dispatcher down |
| 14 Operation mode indicator | 37 Pending floor call (PI controller mode) | |
| 15 Escalator name bar | 38 Locked floor/boarding | |
| 16 Car name | 39 Locked destination | |
| 17 Car movement symbol | 40 Car position in the building, door state | |
| 18 Car position | 41 Travel direction | |
| 19 Operation mode indicator | 42 Pending car call | |
| 20 State of load measurement system | 43 Pending floor call with travel direction request (only collective mode) | |
| 21 Door controller state | 44 Click to collapse/expand info panel | |
| 22 Drive state | 45 Elevator traffic mode | |
| 23 Elevator controller state | | |

How it works

Lobby Vision presents information using on-screen display, and accepts control inputs simply through a graphical user interface. The specification of each Lobby Vision is user-defined.

This may be as complex as a control room facility for supervising many systems in an entire group of buildings, or as simple as a reception desk unit for monitoring a single group of elevators.

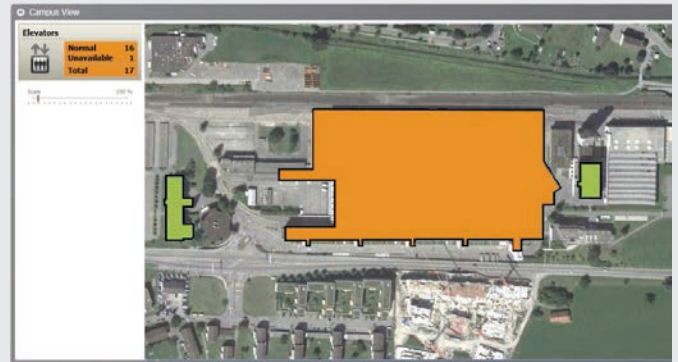
Status View



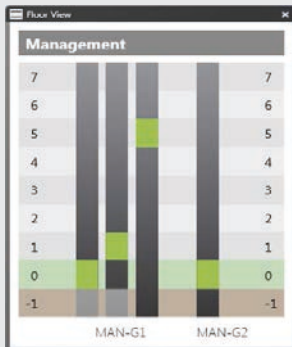
The status overview window shows the elevator and escalator groups, as well as a combined view of all elevators and escalators contained in one building.

All buildings, elevators and escalators groups, as well as elevators and escalators in one plan view, will be visualized with a campus view.

Building complex view

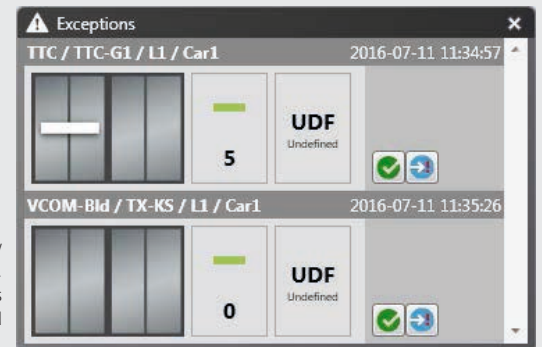


Floor View



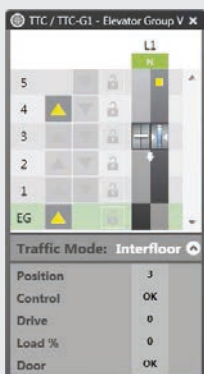
Floor view displays the elevator and escalator groups along with all floors served by each unit.

Exception view



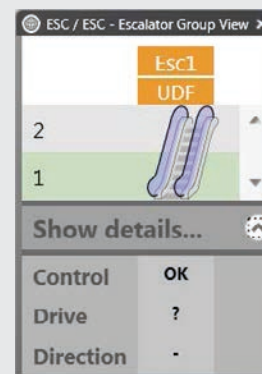
There's one exception view window of the whole campus. This display shows notifications and errors for elevators and escalators in the campus.

Elevator group view



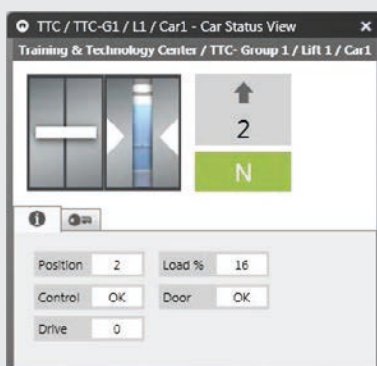
Elevator group view displays the elevators by group along with floors.

Escalator group view



Escalator group view displays the escalators by location.

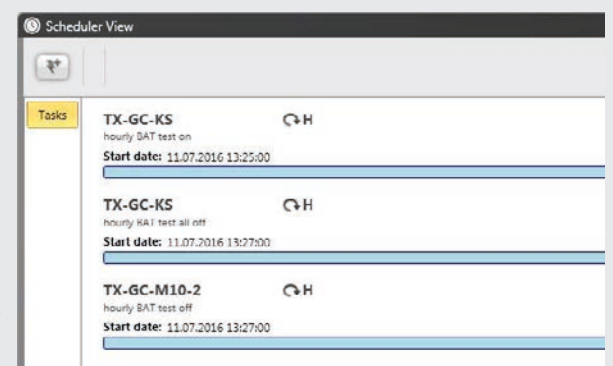
Car status view



Car status view displays the status of an individual elevator including operation mode, door position, and direction of travel.

Schedule view displays the user established alarms, recording schedules, and alerts.

Schedule view



Green matters



Schindler incorporates sustainable green features into our elevator and escalator systems and offers energy saving modernization upgrades. Improving the environmental impact of our products and processes, particularly our own consumption of energy and materials, is fundamental to our corporate responsibility and reinforces our position as an industry leader. Schindler maintains a continuing commitment to improving mobility while preserving resources and minimizing energy consumption.

For further information, including location of the Schindler office nearest you, please contact:

U.S. Headquarters. Morristown, New Jersey

Tel. 973.397.6500

www.us.schindler.com

Canada Headquarters. Scarborough, Ontario

Tel. 416.332.8280

www.ca.schindler.com



Schindler is a member organization of the U.S. Green Building Council.



Schindler has received renewal to ISO 14001:2004 and ISO 9001:2008 certificates.

ISO 9001 | ISO 14001