

Schindler 6400 NA

A complete modernization solution for mid-rise elevators



Schindler 6400 NA is a benefits-rich mid-rise elevator modernization system

» Enhanced performance and reliability

Ensures a higher level of passenger satisfaction with a smoother riding experience.

» Greater sustainability and efficiency

Delivers cutting-edge technologies to significantly reduce energy consumption and costs.

» Improved safety and code compliance

Employs the latest equipment designs with advanced safety features.

» Unmatched aesthetic appeal

Maintains your building's appeal and value with the most attractive aesthetic modifications and customization options.





Rejuvenate your elevators

The Schindler 6400 NA modernization solution can completely transform your existing mid-rise elevators. This total system upgrade package delivers the best of today's elevator technology quickly and affordably.

Streamlined process

The Schindler 6400 NA advantage

Schindler has tailored an elevator modernization program that specifically targets mid-rise buildings with a streamlined, time-saving process — from engineering and ordering, right through delivery and installation. Reliable, eco-friendly technology is packaged into our integrated group of upgrades. Each component is designed with the flexibility to adapt to your building design and your needs. Your elevators are brought up to today's standards for reliability, efficiency and sustainability — quickly, cost effectively and with minimal disruption.


How it works:

- Comprehensive proposals focused on safety and value-added solutions
- Automated engineering and ordering processes
- Components designed for fast, easy retrofitting to existing elevators
- Specialized packaging for fast unloading and installation
- Simplified wiring with clear labeling
- Highly trained installers following proven, “best practice” installation methods.

Modernize now, pay over time

Schindler modernization financing

Schindler can make it easier than ever to realize the economic benefits of an elevator modernization, while avoiding a large up-front investment. Through special arrangements with leading commercial banks, Schindler provides a convenient way to finance a complete Schindler modernization at attractive and competitive rates, for periods of two to seven years or more. It means you can substantially improve the performance and dependability of your equipment immediately — and keep tenants satisfied — while preserving your capital for other needs. With favorable financing terms subject to credit approval, it can be more economical to upgrade your equipment all at once.



Learn how to take advantage of a Schindler modernization right now, under an attractive financing option. Contact your Schindler representative today.

The keys to success

The Schindler 6400 NA components

This mid-rise modernization package includes an integrated family of proven products, all of which are designed to deliver improved performance, reliability, sustainability, efficiency, safety and appearance.

Enhanced performance

Miconic® TX controller

Improved availability

Schindler Remote Monitoring

Energy saving

Power Factor 1 regenerative drive/
FMM 200 modular gearless machine

Quiet

Suspension Traction Media

Reliable

Varidor 50A door operator

Ultra-responsive

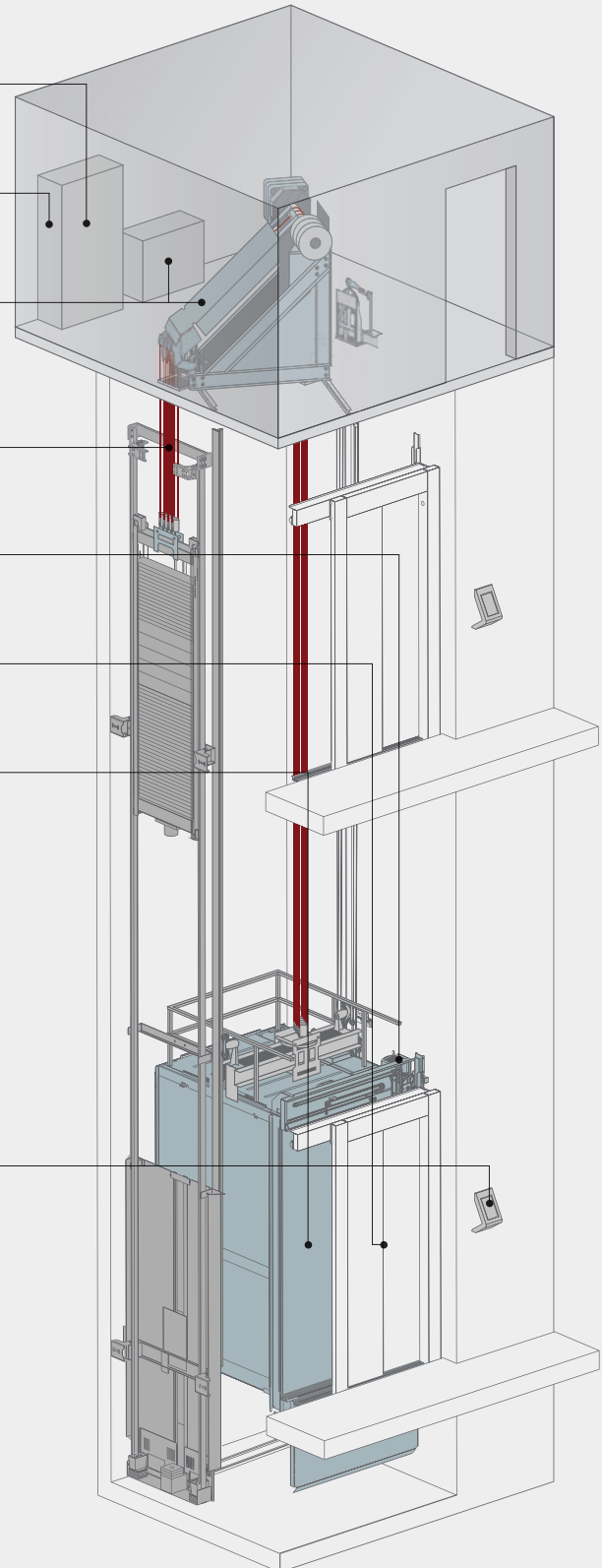
Progard L light curtain

Appealing

Car aesthetic upgrades

Efficient

Optional destination dispatching with
PORT Technology



Enhanced performance and reliability

The Schindler 6400 NA modernization solution allows your elevator passengers to enjoy a smooth, comfortable ride.

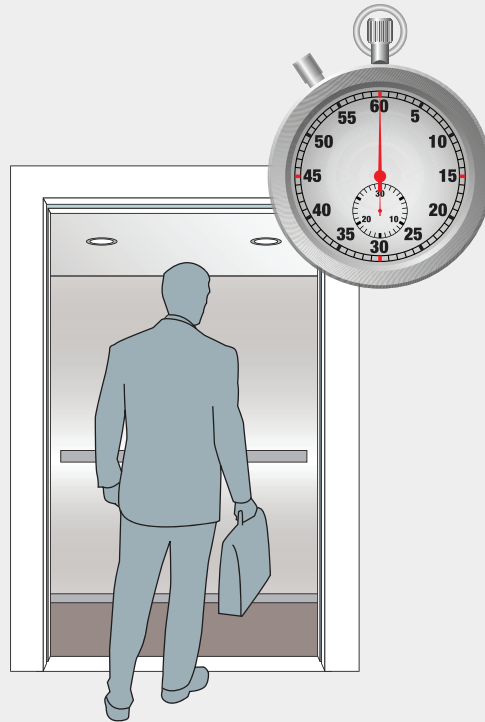
Maximized elevator handling capacity

The Schindler Miconic® TX controller

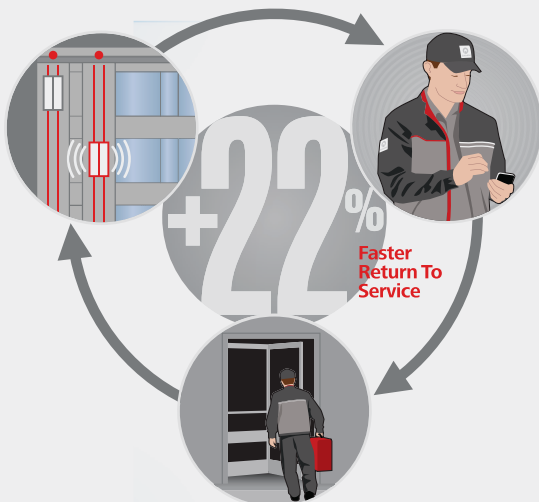
The Miconic® TX delivers unbeatable traffic handling in mid-rise buildings and is ideally suited to residential buildings, offices, hospitals and hotels. Miconic TX employs a very refined algorithm that minimizes waiting time for all passengers. Miconic TX can be custom tailored for modernizations with a broad range of customer-specified enhancements.

Benefits:

- Reduce waiting times
- High system redundancy
- Smooth change-over between normal and peak traffic
- Adaptive distribution of free cars
- Adjustable full load bypass
- Anti-nuisance car call cancellation
- Superior floor-to-floor ride comfort
- Equipped with Schindler Remote Monitoring.



The Miconic TX controller's 'cost of service' strategy can measurably reduce waiting time for all passengers.



Schindler Remote Monitoring can restore service up to 22% faster than traditional service platforms.

Schindler Remote Monitoring (SRM)

With Schindler as your elevator service partner, you will be able to activate Schindler Remote Monitoring and help ensure your system's continued level of high performance. SRM monitors a variety of your elevator's operational features 24/7.

When a change in performance is detected, SRM quickly reports the issue to the Schindler call center so a technician can be dispatched. The system also sends the technician intelligence and diagnostics to help return your equipment to service faster than traditional troubleshooting methods.

Schindler destination dispatching

Take the significant traffic handling improvements of your Schindler Miconic TX controller to even higher levels of performance with award-winning Schindler PORT Technology destination dispatching. You can achieve even more efficient traffic handling as well as personalized service and access control features.

Benefits:

- Improves your elevator's traffic handling capacity by up to 40 percent
- Makes fewer stops and reduces passenger wait times and overall travel time
- Building managers can offer their tenants a range of benefits including personalized elevator service tailored to individual requirements, integrated access control and enhanced building security
- Meets or exceeds ADA requirements for persons with special needs.



Schindler PORT Technology achieves the highest levels of traffic handling efficiency.



Schindler PORT Technology combines increased passenger handling capacity with measurable energy savings.

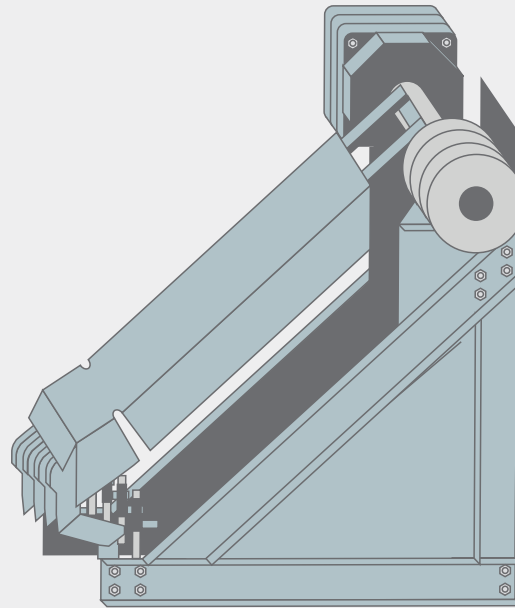
Noticeably smoother, quieter operation

FMM 200 modular gearless machines

Schindler's gearless machine upgrade for mid-rise buildings replaces your older geared machine. It is specifically designed for use in existing machine rooms to create an unbeatable value that delivers significant benefits.

Benefits:

- Delivered unassembled for easier modernization applications
- Smoother, quieter ride performance
- Fast, reliable operation
- More efficient energy usage
- Schindler Suspension Traction Media (STM) replaces conventional cables and requires a significantly smaller sheave to save space.



Schindler's FMM200 modular machines simplify the installation process. They can be disassembled on-site, then reassembled in the machine room. This makes the installation much simpler and more convenient for existing machine rooms.

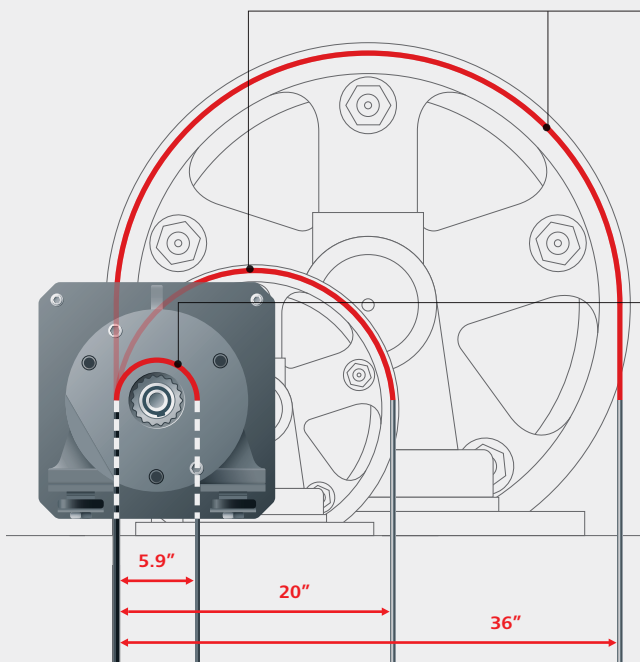
The STM advantage

Previously: steel cables

Steel cables on mid-rise elevators need a traction sheave diameter of 20" to 36". The complete conventional motor machine must be large enough to match and therefore requires considerable space.

New: Suspension Traction Media

Suspension Traction Media use a traction pulley that is only 5.9" in diameter. A much smaller sheave also means the system requires a much smaller motor resulting in a significant space savings. Plus STM has a service life that is three times longer than conventional steel cables.



Greater sustainability and efficiency

Schindler is committed to conducting its business activities in harmony with society and the environment.

Greener by design

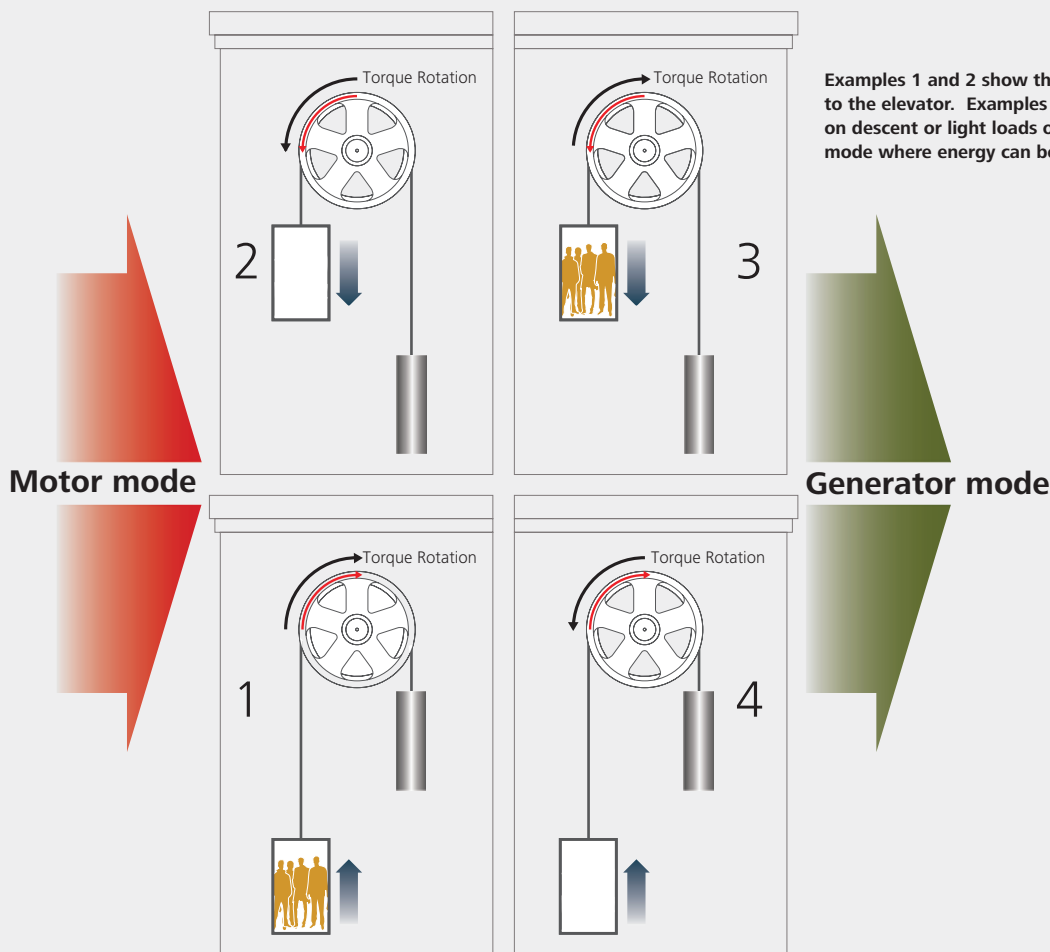
Schindler Power Factor 1 regenerative drives

Schindler offers true Power Factor 1 drive technology with a power factor rating of .99. This drive system can safely return regenerative energy back into the building's power line where it can be used to power other elevators, building lighting system, air conditioning and other electrical equipment.

Benefits:

- Less net power usage, saving energy
- Reduced heat generation, lowering machine room cooling cost
- Low harmonic distortion means clean, reusable energy
- Precise operation for smoother ride quality
- Possibility of government and local utility rebates
- Potential to earn LEED® points.

Examples 1 and 2 show the motor mode when energy is delivered to the elevator. Examples 3 and 4 show that during heavy loads on descent or light loads on ascent, the drive operates in generator mode where energy can be returned to the buildings' power grid.



Improved safety and code compliance

Safety is a top priority at Schindler. We design and build our elevators with a range of safety features and work diligently to ensure our systems are properly maintained and used safely.

Smoother and safer boarding and exiting

Schindler Varidor 50A door operators

Door operation is critical to a passenger's safety, convenience and experience. The Schindler Varidor 50A linear door operator provides just that.

Benefits:

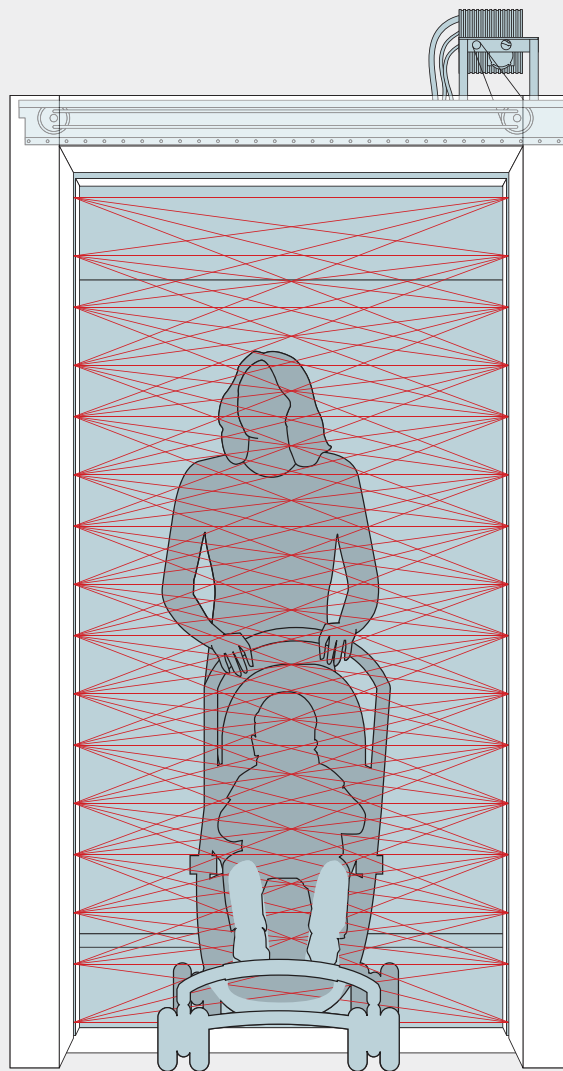
- True digital closed-loop feedback for smooth, quiet, reliable performance
- Accurate drive motor speed control
- Constant opening/closing force even if some doors are substantially heavier
- Ability to accommodate a wide range of door heights and widths.

Progard L light curtain

Ultra-responsive Progard L light curtain system can protect passengers from closing doors.

Benefits:

- Uses scores of infrared light beams
- Requires no physical contact to operate
- Immediately opens a closing elevator car door if a small object moves into its path
- Does not project beyond the door edge, so it is less exposed to damage.



Schindler door operators and safety sensors react quickly while maintaining speed and force within applicable safety standards.

Unmatched aesthetic appeal

Create a unique look for your elevators by choosing from a broad selection and combination of surface materials, lighting and hardware.

Better looks to match better performance

Elevator aesthetic improvements

Cab remodeling is a great way to add value to any building. Schindler has pre-designed interior options that will fit your style and budget. Choose from a variety of cabs, each with a large selection and combination of surface materials, lighting and hardware. Schindler's standard fixtures are economical, as well as durable and attractive. Custom fixture designs are also available for customers seeking a truly unique look.



➤ In addition to improvements in performance, reliability and safety, aesthetics are often an important consideration in a modernization.

The elements of style

Ceilings

Start creating your own exciting cab appearance with brilliant and efficient LED ceiling lights available in a choice of ceiling designs.

Walls

Mix and match powder coat colors with laminates, textured stainless steel and mirrors, to create a unique atmosphere in your elevator's cab.

Handrails

Incorporate safety, comfort and style with round or flat handrails. Handrails are available in stainless steel or aluminum, with straight endings or gently bended towards the wall.



Images to the right are from the
Schindler Elevator Interiors Catalog

Fixtures

Schindler's fixtures for mid-rise modernization are available for flush mounting or elegant low-profile surface mounting, in finishes to coordinate with your existing elevator or car operating panel. All fixtures feature long-lasting LED illumination.

Hall and car stations are designed to be elegant and robust with a variety of halo illumination options. Hall and car lanterns come in horizontal or vertical configurations.

All fixtures are available in #4 brushed stainless steel or bronze and #8 mirrored stainless steel or bronze.

Car operating panels come fully equipped with all necessary features and functions including:

- Vandal-resistant durable buttons
- Position indicator
- Emergency light
- Voice communications
- Fire operation
- Service buttons
- Floor access controls
- Service cabinet
- Car panel engravings/signage.



Surface mounted hall/car lantern



Surface mounted hall pushbutton



Flush mounted hall lantern/position indicator

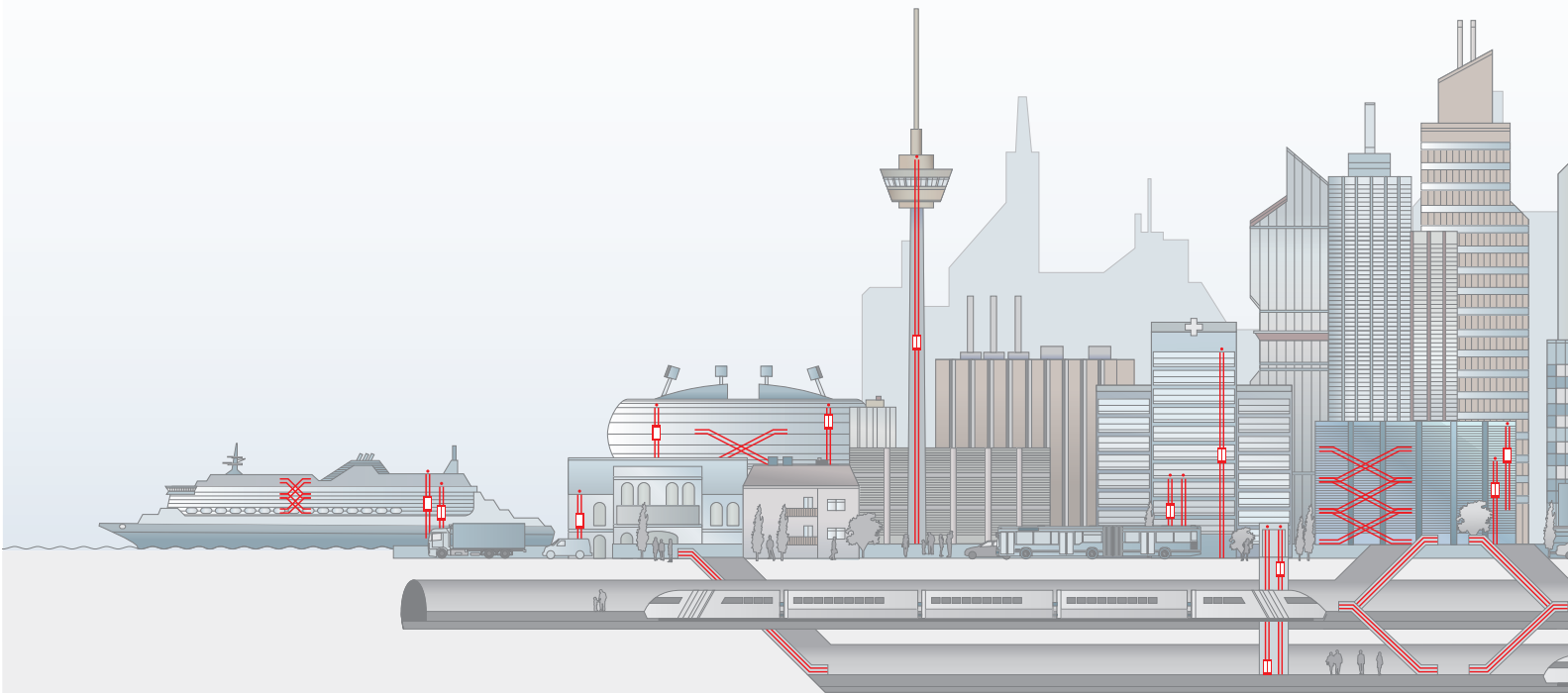


Car operating panel

From 1st level to skyline, providing urban mobility

Mobility is an essential requirement in the world in which we live and work. Schindler stands for urban mobility and is recognized as a hallmark of quality and safety. Daily, one billion people worldwide place their trust in Schindler products and services.

Schindler provides urban mobility with elevators, escalators and services that are engineered for efficiency and sustainability. Schindler accompanies the development of buildings from planning to construction to daily operation and maintaining its lifetime value.



Comprehensive planning

In order to meet individual transport needs and to create real mobility solutions, we look at more than just the perfect fit for installation. At Schindler planning starts with the analysis and simulation of traffic to determine the best solution. At Schindler we provide the expertise and the tools for individual planning:

- Analysis and simulation of traffic before installation
- Finding the perfect fit and solution
- Setup of intelligent traffic management.

Efficient products

With our full portfolio of elevators and escalators, we provide mobility solutions for all applications — always equipped with the latest technology for energy and transport efficiency. Our range of applications:

- Smaller residential and office buildings
- Commercial towers, retail environments
- Hospitals and public buildings
- Heavy-traffic environments
- High-rise buildings
- Cruise liners.

» You can point your finger to any mid-rise building in our Schindler city and the Schindler 6400 NA will be the best modernization solution for commercial and residential buildings, as well as hotels and hospitals.



Sustainable operation

At Schindler we secure the smooth and lasting operation of your products from day one through:

- Global network of service technicians
- Availability and fast delivery of spare parts
- Quick responding call-center personnel
- E-monitoring diagnostic tools.

Leading technology

Progress needs innovation. Therefore, we constantly develop new products and features for high standards and more efficiency that can be easily integrated into your system. Our cutting-edge developments:

- PORT Technology: access and destination control
- E-Vision: car entertainment and information system.

Ever greener

Keeping the environment in mind

Schindler is committed to helping you reduce the environmental footprint of your buildings and qualify for LEED® certification by incorporating sustainable green features into our elevator and escalator systems. Improving the environmental impact of our products and processes, particularly our consumption of energy and materials, is fundamental to our corporate responsibility as an industry leader. Schindler 6400 NA is a prime example of our continuing commitment to improve mobility while preserving resources.

LEED is a registered trademark of the U.S. Green Building Council



Find more information about Schindler 6400 NA elevator modernization.

Just scan the code with your mobile phone, using free QR code scanner software. This is either pre-installed on your phone or easily downloadable for free.

For further information, including location of the Schindler office nearest you, please contact:

U.S. Headquarters. Morristown, New Jersey
Toll-Free 877.696.8382
www.us.schindler.com

Canada Headquarters. Toronto, Ontario
Tel. 416.332.8280
www.ca.schindler.com



Schindler is a member organization of the U.S. Green Building Council.



Schindler has received renewal to ISO 9001 and ISO 14001 certificates.



Schindler prints with vegetable-based ink on paper containing post-consumer waste fiber.

Follow us:

