

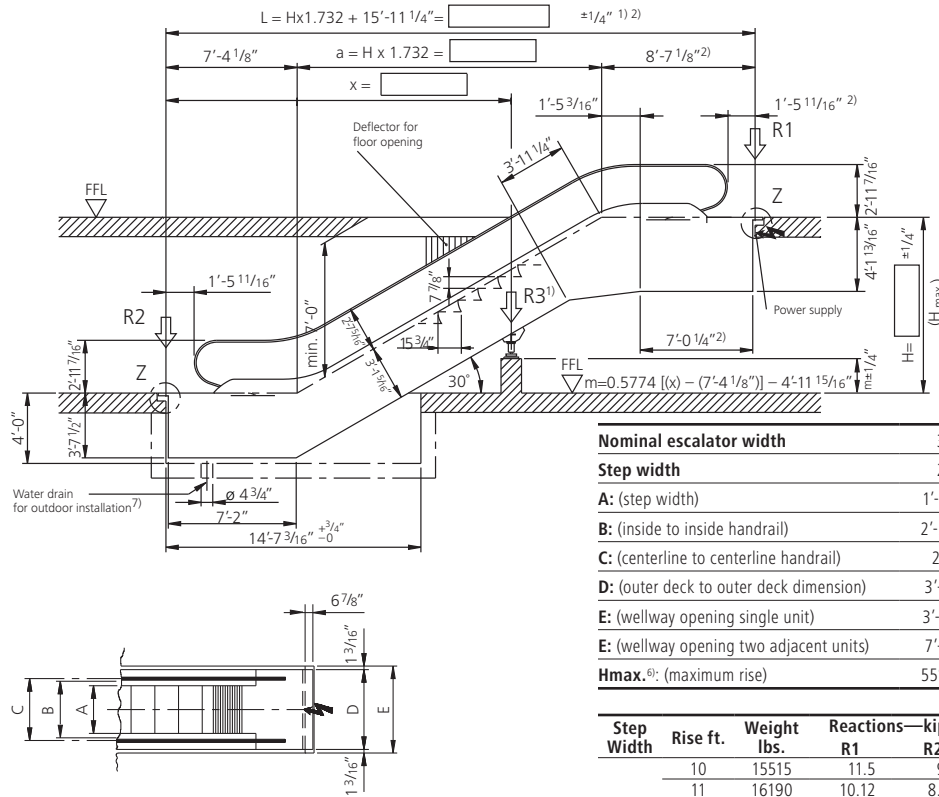
Schindler 9300[®] Advanced Edition

Type 20 30°-K

Rise: max. 42'-7 3/4" at a step width of 40"
Balustrade: Design E/F
Balustrade Height: 2'-11 1/16"/3'-3 3/8"

Speed: 90/100 fpm
Inclination: 30°

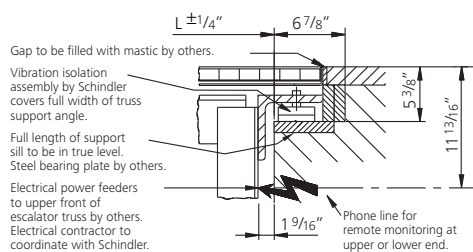
Nominal Width: 32"/40"/48"
Step Width: 24"/32"/40"
Step Run: 2 horizontal steps



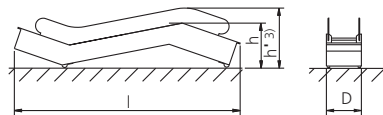
Dimension	32"	40"	48"
Nominal escalator width	32"	40"	48"
Step width	24"	32"	40"
A: (step width)	1'-11 5/8"	2'-7 1/2"	3'-3 3/8"
B: (inside to inside handrail)	2'-5 13/16"	3'-1 11/16"	3'-9 9/16"
C: (centerline to centerline handrail)	2'-9"	3'-4 1/8"	4'-0 3/4"
D: (outer deck to outer deck dimension)	3'-8 7/8"	4'-4 1/4"	5'-0 5/8"
E: (wellway opening single unit)	3'-11 1/4"	4'-7 1/8"	5'-3"
E: (wellway opening two adjacent units)	7'-8 1/2"	9'-0 1/4"	10'-4"
Hmax. ⁽⁶⁾ : (maximum rise)	55'-9 1/4"	49'-2 1/2"	42'-7 3/4"

Step Width	Rise ft.	Weight lbs.	Reactions—kips		Transport dim.	
			R1	R2	h=Height	l=Length
24"	10	15515	11.5	9.3	7'-5"	36'-5"
	11	16190	10.12	8.32	7'-5 3/4"	38'-5"
	12	16640	10.34	8.77	7'-6 3/4"	40'-5"
	13	17310	10.79	8.99	7'-7"	42'-4"
	14	17760	11.24	9.44	7'-7 1/2"	44'-4"
	15	18435	11.47	9.89	7'-8 1/4"	46'-4"
	16	18885	11.91	10.12	7'-8 1/2"	48'-4"
	17	19560	12.14	10.57	7'-9"	50'-4"
	18	20010	12.36	10.79	7'-9 1/2"	52'-4"
	19	20685	13.04	11.24	7'-9 3/4"	54'-4"
	20	21585	13.26	11.69	(8)	(8)
21	22260	13.71	11.91	(8)	(8)	
32"	10	16640	10.57	8.99	7'-5"	36'-5"
	11	17310	11.02	9.44	7'-5 3/4"	38'-5"
	12	17760	11.47	9.67	7'-6 3/4"	40'-5"
	13	18435	11.91	10.12	7'-7"	42'-4"
	14	18885	12.36	10.57	7'-7 1/2"	44'-4"
	15	19560	12.59	11.02	7'-8 1/4"	46'-4"
	16	20235	13.04	11.47	7'-8 1/2"	48'-4"
	17	20685	13.49	11.69	7'-9"	50'-4"
	18	21805	13.94	12.14	7'-9 1/2"	52'-4"
	19	22480	14.61	13.08	7'-9 3/4"	54'-4"
	20	23155	15.06	13.26	(8)	(8)
21	23830	15.51	13.71	(8)	(8)	
40"	10	17760	11.69	9.89	7'-5"	36'-5"
	11	18435	12.14	10.34	7'-5 3/4"	38'-5"
	12	19110	12.59	10.79	7'-6 3/4"	40'-5"
	13	19560	13.04	11.24	7'-7"	42'-4"
	14	2025	13.49	11.69	7'-7 1/2"	44'-4"
	15	20910	13.94	12.14	7'-8 1/4"	46'-4"
	16	22030	14.39	12.59	7'-8 1/2"	48'-4"
	17	22705	15.29	13.49	7'-9"	50'-4"
	18	23380	15.74	13.94	7'-9 1/2"	52'-4"
	19	24055	16.19	14.39	7'-9 3/4"	54'-4"
	20	24780	16.64	14.84	(8)	(8)
21				INTERMEDIATE SUPPORT REQUIRED	(8)	

Detail Z



Transport dimensions



- Under certain conditions, an intermediate support may be required. For support loads, contact your local Schindler office.
- In the case of a double drive, the truss must be extended by 1'-4 7/16".
- $h' = h + 2'-6 5/16"$.
- Motor size: for detailed information, contact your local Schindler office.
- In the case of balustrade height 3'-3 3/8", h' is increased by 2 3/4".
- Based on this step run, without truss extension.
- Add 8" to pit depth if oil separator is required.
- For higher rises, delivery in two parts may be required.

Dimensions shown are for U.S. applications. For specific requirements in Canada, please consult your local Canadian sales office. Subject to change.



Schindler

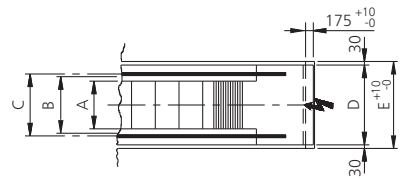
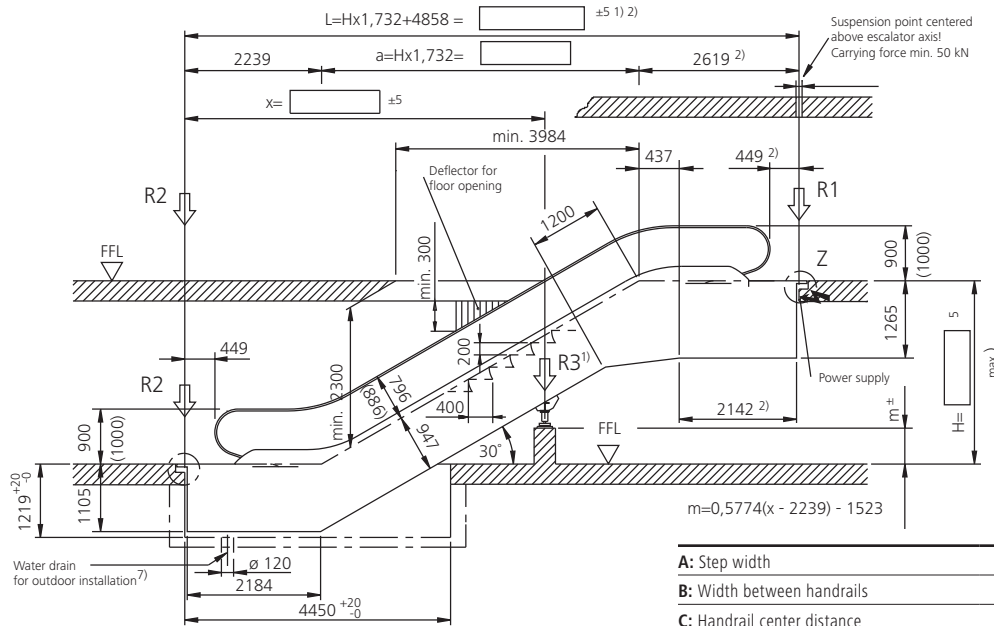
Schindler 9300® Advanced Edition

Type 20 30°-K

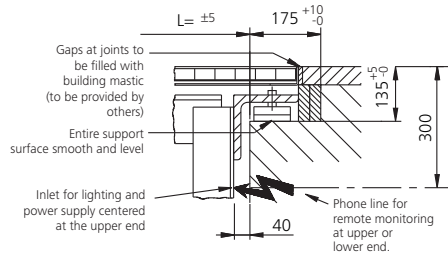
Rise: max. 13 m at a step width of 1000 mm
Balustrade: Design E/F
Balustrade Height: 900/1000 mm

Speed: 0.5 m/s
Inclination: 30°

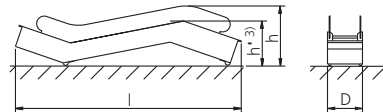
Step Width: 600/800/1000 mm
Step Run: 2 horizontal steps



Detail Z



Transport dimensions



- Under certain conditions, an intermediate support may be required; please consult your local Schindler office.
- In the case of a double drive, the truss must be extended by 417 mm.
- $h' = h - 770$ mm
- Motor Size: For detailed information, consult your local Schindler office.
- In the case of balustrade height 900 mm, h is reduced by 70 mm.
- Based on this step run, without truss extension.
- Add 203 mm to pit depth if oil separator is required.
- For higher rises, delivery in two parts may be required. Dimensions shown are for U.S. applications. For specific requirements in Canada, please consult your local Canadian sales office. Subject to change.

	600	800	1000
A: Step width	600	800	1000
B: Width between handrails	758	958	1158
C: Handrail center distance	838	1038	1238
D: Width of escalator	1140	1340	1540
E: Width of well	1200	1400	1600
Hmax.⁹: Maximum rise	17000	15000	13000

Step Width A mm	Rise H mm	Weight kN	Support loads		Transport Dimensions Balustrade height 1000	
			R1 kN	R2 kN	h ⁵⁾	l
600	3000	73	58	48	3060	11990
	3500	77	61	51	3090	12980
	4000	81	64	55	3110	13970
	4500	85	68	58	3120	14970
	5000	89	71	61	3140	15960
	5500	93	74	65	3150	16960
800	6000	100	79	69	Ⓢ)	Ⓢ)
	3000	78	66	56	3060	11990
	3500	82	70	60	3090	12980
	4000	87	74	64	3110	13970
	4500	91	78	68	3120	14970
	5000	98	83	73	3140	15960
1000	5500	102	87	76	3150	16960
	6000	106	90	80	Ⓢ)	Ⓢ)
	3000	83	74	64	3060	11990
	3500	88	78	68	3090	12980
	4000	92	83	73	3110	13970
	4500	99	89	78	3120	14970
	5000	104	93	83	3140	15960
	5500	109	98	87	3150	16960
	6000	114	102	92	Ⓢ)	Ⓢ)

All dimensions in mm. Observe national regulations! Subject to change.

For further information, including location of the Schindler office nearest you, please visit:
www.us.schindler.com

U.S. Headquarters. Morristown, New Jersey
 Toll-Free 877.696.8382 www.us.schindler.com

Canada Headquarters. Toronto, Ontario
 Tel. 416.332.8280 www.ca.schindler.com

