

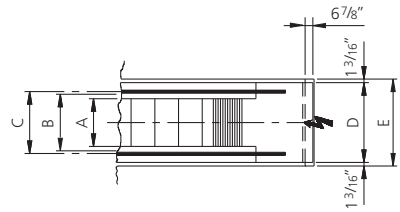
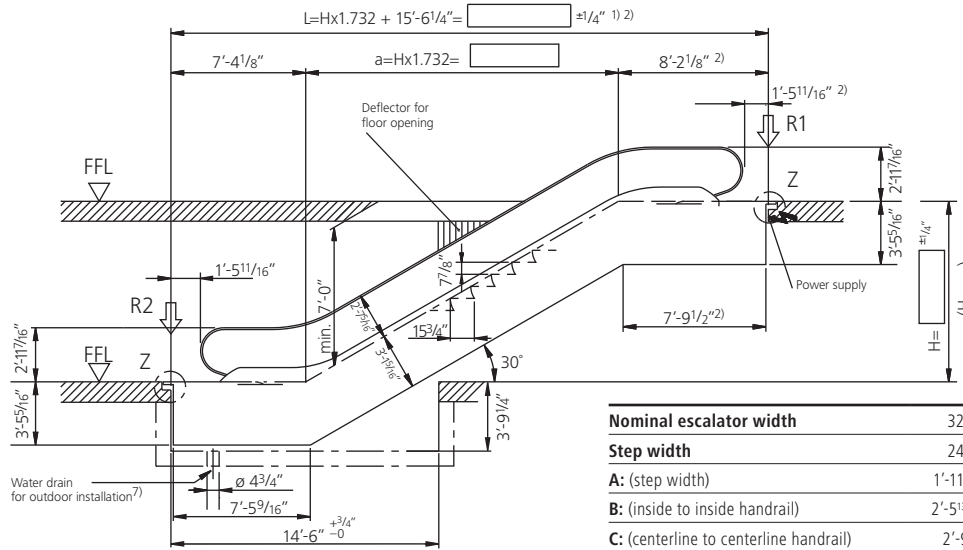
# Schindler 9300<sup>®</sup> Advanced Edition

## Type 10 30°-K

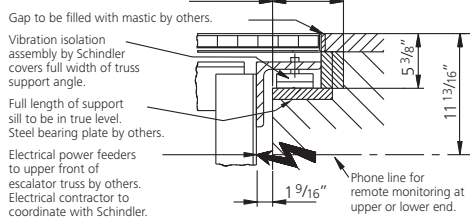
**Rise:** max. 26'-2 15/16" at a step width of 40"  
**Balustrade:** Design E/F  
**Balustrade Height:** 2'-11 7/16"/3'-3 3/8"

**Speed:** 90/100 fpm  
**Inclination:** 30°

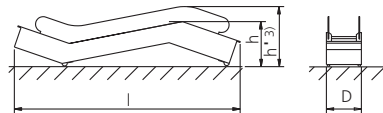
**Nominal Width:** 32"/40"/48"  
**Step Width:** 24"/32"/40"  
**Step Run:** 2 horizontal steps



### Detail Z



### Transport dimensions



- Under certain conditions, an intermediate support may be required. For support loads, contact your local Schindler office.
- In the case of a double drive, the truss must be extended by 1'-4 7/16".
- $h' = h + 2' - 6 5/16"$ .
- Motor size: for detailed information, contact your local Schindler office.
- In the case of balustrade height 3'-3 3/8",  $h'$  is increased by 2 3/4".
- Based on this step run, without truss extension.
- Add 8" to pit depth if oil separator is required.
- For higher rises, delivery in two parts may be required.

	32"	40"	48"
<b>Nominal escalator width</b>	32"	40"	48"
<b>Step width</b>	24"	32"	40"
<b>A: (step width)</b>	1'-11 5/8"	2'-7 1/2"	3'-3 3/8"
<b>B: (inside to inside handrail)</b>	2'-5 3/16"	3'-1 1/16"	3'-9 9/16"
<b>C: (centerline to centerline handrail)</b>	2'-9"	3'-4 7/8"	4'-0 3/4"
<b>D: (outer deck to outer deck dimension)</b>	3'-8 7/8"	4'-4 3/4"	5'-0 3/8"
<b>E: (wellway opening single unit)</b>	3'-11 1/4"	4'-7 1/8"	5'-3"
<b>E: (wellway opening two adjacent units)</b>	7'-8 1/2"	9'-0 1/4"	10'-4"
<b>Hmax.<sup>(8)</sup>: (maximum rise)</b>	39'-4 7/16"	32'-9 11/16"	26'-2 15/16"

Step Width	Rise ft.	Weight lbs.	Reactions—kips		Transport dim.	
			R1	R2	h=Height	l=Length
24"	10	12810	9.67	8.09	6'-9 1/8"	36'-0"
	11	13260	10.12	8.32	6'-9 7/8"	38'-0"
	12	13710	10.34	8.77	6'-10 3/16"	40'-0"
	13	14160	10.79	8.99	6'-11 1/16"	41'-11"
	14	14610	11.24	9.44	6'-11 7/16"	43'-11"
	15	15060	11.47	9.89	6'-11 3/8"	45'-11"
	16	15510	11.91	10.12	7'-0 1/4"	47'-11"
	17	15960	12.14	10.57	7'-0 5/8"	49'-11"
	18	16410	12.36	10.79	7'-0 3/8"	51'-11"
	19	16860	13.04	11.24	7'-1 1/16"	53'-11"
	20	17310	13.26	11.69	Ⓢ	Ⓢ
21	17980	13.71	11.91	Ⓢ	Ⓢ	
32"	10	13490	10.57	8.99	6'-9 1/8"	36'-0"
	11	13940	11.02	9.44	6'-9 7/8"	38'-0"
	12	14390	11.47	9.67	6'-10 3/16"	40'-0"
	13	14840	11.91	10.12	6'-11 1/16"	41'-11"
	14	15510	12.36	10.57	6'-11 7/16"	43'-11"
	15	15960	12.59	11.02	6'-11 3/8"	45'-11"
	16	16410	13.04	11.47	7'-0 1/4"	47'-11"
	17	16860	13.49	11.69	7'-0 5/8"	49'-11"
	18	17310	13.94	12.14	7'-0 3/8"	51'-11"
	19	18660	14.61	13.08	7'-1 1/16"	53'-11"
	20	19110	15.06	13.26	Ⓢ	Ⓢ
21	19560	15.51	13.71	Ⓢ	Ⓢ	
40"	10	14160	11.69	9.89	6'-9 1/8"	36'-0"
	11	14840	12.14	10.34	6'-9 7/8"	38'-0"
	12	15290	12.59	10.79	6'-10 3/16"	40'-0"
	13	15740	13.04	11.24	6'-11 1/16"	41'-11"
	14	16410	13.49	11.69	6'-11 7/16"	43'-11"
	15	16860	13.94	12.14	6'-11 3/8"	45'-11"
	16	17540	14.39	12.59	7'-0 1/4"	47'-11"
	17	18660	15.29	13.49	7'-0 5/8"	49'-11"
	18	19110	15.74	13.94	7'-0 3/8"	51'-11"
	19	19780	16.19	14.39	7'-1 1/16"	53'-11"
	20	20230	16.64	14.84	Ⓢ	Ⓢ
21	20910	17.09	15.29	Ⓢ	Ⓢ	

Dimensions shown are for U.S. applications. For specific requirements in Canada, please consult your local Canadian sales office. Subject to change.



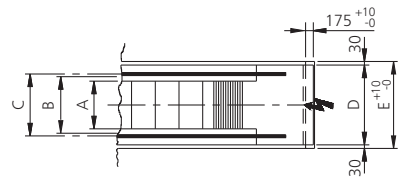
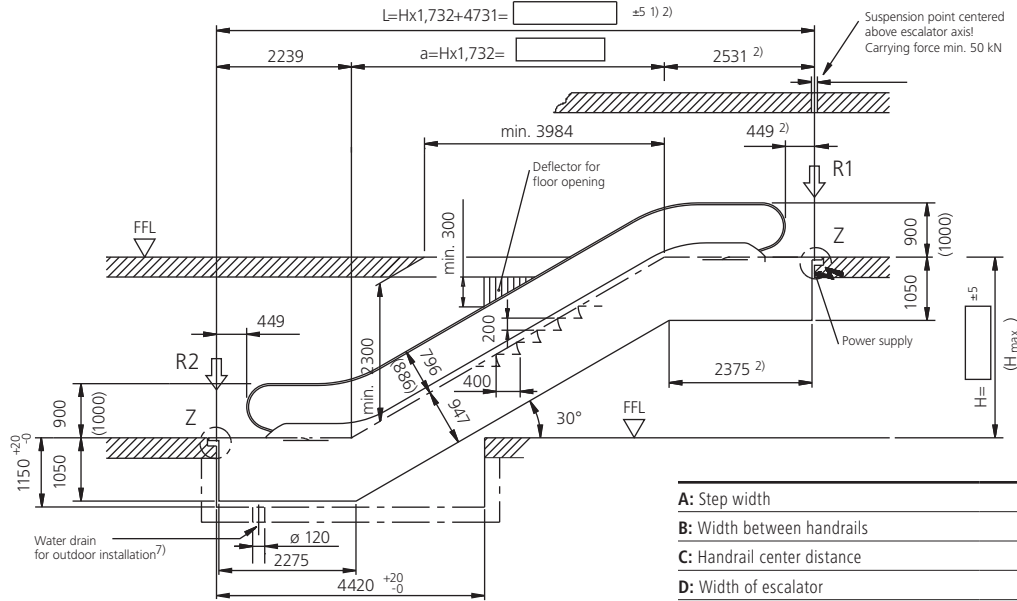
**Schindler**

# Schindler 9300<sup>®</sup> Advanced Edition

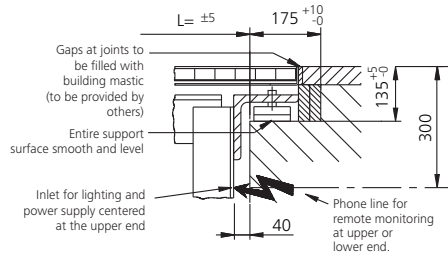
## Type 10 30°-K

**Rise:** max. 8 m at a step width of 1000 mm  
**Balustrade:** Design E/F  
**Balustrade Height:** 900/1000 mm

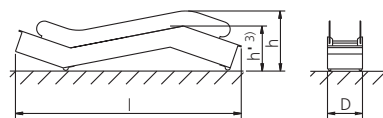
**Inclination:** 30°  
**Step Width:** 600/800/1000 mm  
**Step Run:** 2 horizontal steps



### Detail Z



### Transport dimensions



- Under certain conditions, an intermediate support may be required; please consult your local Schindler office.
- In the case of a double drive, the truss must be extended by 417 mm.
- $h' = h - 770$  mm
- Motor Size: For detailed information, consult your local Schindler office.
- In the case of balustrade height 900 mm, h is reduced by 70 mm.
- Based on this step run, without truss extension.
- Add 203 mm to pit depth if oil separator is required.
- For higher rises, delivery in two parts may be required. Dimensions shown are for U.S. applications. For specific requirements in Canada, please consult your local Canadian sales office. Subject to change.

	600	800	1000
<b>A:</b> Step width	600	800	1000
<b>B:</b> Width between handrails	758	958	1158
<b>C:</b> Handrail center distance	838	1038	1238
<b>D:</b> Width of escalator	1140	1340	1540
<b>E:</b> Width of well	1200	1400	1600
<b>Hmax.<sup>6)</sup></b> Maximum rise	12000	10000	8000

Step Width A mm	Rise H mm	Weight kN	Support loads		Transport Dimensions Balustrade height 1000	
			R1 kN	R2 kN	h <sup>5)</sup>	l
600	3000	57	47	39	2740	10860
	3500	60	50	42	2760	11850
	4000	63	53	45	2780	12840
	4500	67	56	48	2800	13840
	5000	70	59	51	2820	14830
	5500	73	62	54	2830	15830
800	3000	60	53	46	2740	10860
	3500	63	57	49	2760	11850
	4000	67	61	53	2780	12840
	4500	70	64	56	2800	13840
	5000	74	68	60	2820	14830
	5500	78	71	63	2830	15830
1000	3000	63	60	52	2740	10860
	3500	67	64	57	2760	11850
	4000	71	68	61	2780	12840
	4500	75	73	65	2800	13840
	5000	81	78	70	2820	14830
	5500	85	82	74	2830	15830
6000	89	86	79	2840	16820	

All dimensions in mm. Observe national regulations! Subject to change.

For further information, including location of the Schindler office nearest you, please visit:  
[www.us.schindler.com](http://www.us.schindler.com)

U.S. Headquarters. Morristown, New Jersey  
 Toll-Free 877.696.8382 [www.us.schindler.com](http://www.us.schindler.com)

Canada Headquarters. Toronto, Ontario  
 Tel. 416.332.8280 [www.ca.schindler.com](http://www.ca.schindler.com)

