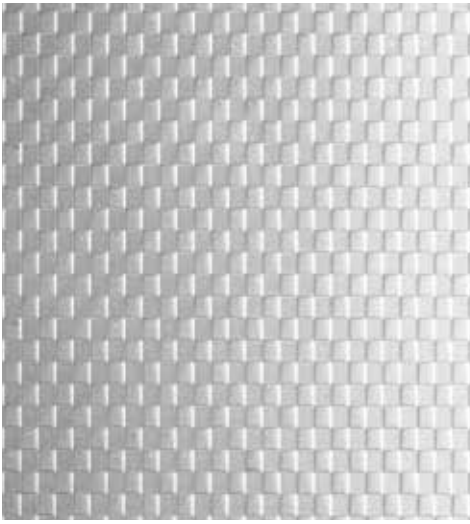




## Schindler 2600

The freight elevator that makes transportation of heavy loads effortless





About	04
Interior	09
Fixtures	10
Planning	12

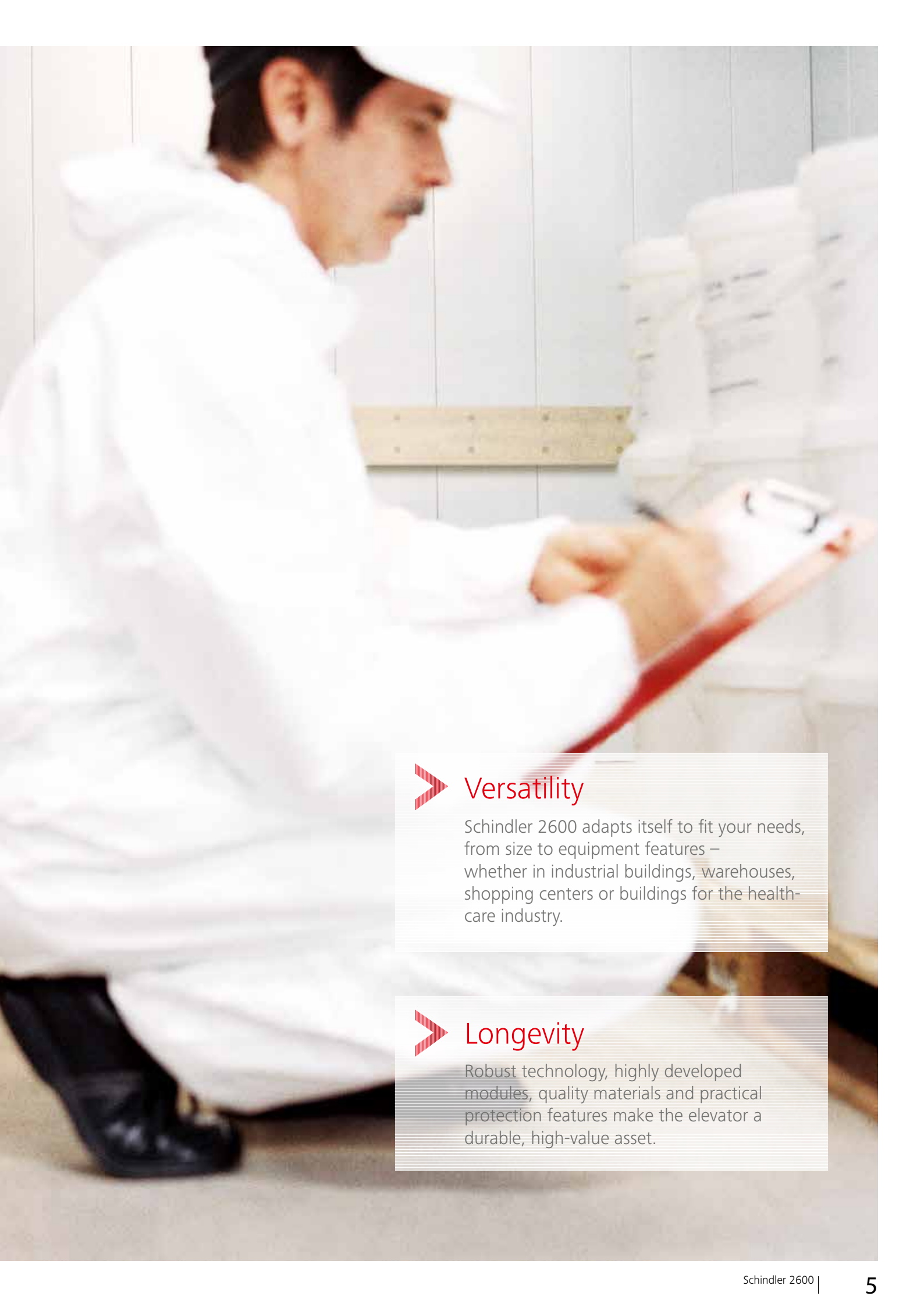
**About** and why Schindler 2600 is the ultimate heavy duty elevator 04-07 **Interior** design choices offering durability and style 09 **Fixtures** and features expanding functionality 10 **Planning** data showing how much fits in 12-13

# Moving heavy things with ease

## ➤ Key figures

Capacity	1000 – 4000 kg, 13 – 53 persons
Travel height	Max. 65 m, max. 21 floors
Entrance	One- or two-sided
Door width	800 – 2500 mm
Door height	2000 – 2500 mm
Drive	Frequency controlled gearless machine
Speed	0.8 to 1.6 m/s
Control	Pick-up, down collective and collective/selective mode, groups of up to 4 elevators
Equipment	Flexible range of interiors





## > Versatility

Schindler 2600 adapts itself to fit your needs, from size to equipment features – whether in industrial buildings, warehouses, shopping centers or buildings for the health-care industry.

## > Longevity

Robust technology, highly developed modules, quality materials and practical protection features make the elevator a durable, high-value asset.

# Versatility

## Usage category

Schindler 2600 is designed with the building in mind. Whether it is important to offload deliveries promptly, move heavy goods, up to 4000 kg, with ease or simply transport shoppers up to the car park level, Schindler 2600 has a fit for all.

## Heavy loads are lightened

You want to transport heavy cargo and goods? At a quick pace and over the long term? Then the Schindler 2600 is the ideal choice for you, as it is equipped with load-bearing capacity to meet a wide range of requirements.

## Car

The car's construction is highly flexible, so that it perfectly fits the intended site for its use in various applications.

## Doors

The doors are designed with functionality in mind. They efficiently exploit the width of the shaft and can be exactly as high and as wide as the car. This produces a number of advantages. Loading and unloading the car is convenient and damage to the doors is avoided. The opening and closing speed of the doors can also be adjusted.



Shopping centers, car parks

1.30 m x 1.75 m  
< 1500 kg



Warehouses, industrial buildings, factories

1.50 m x 2.70 m  
< 3000 kg



Loading docks, storage facilities

2.20 m x 3.20 m  
≤ 4000 kg

# Longevity

## **Modular construction**

With the Schindler 2600, we rely on consistent system engineering and high standardization. For this reason, we have given this elevator a modular construction. It is based on pre-assembled components that reflect the latest technology, so that in the event of a breakdown repairs are highly efficient.

## **Robust design**

With the Schindler 2600 you may select and combine materials and colors to fit your requirements. The choice of durable, yet versatile materials will contribute to a lasting operation in style. For heavy-duty usage bumper rails can be added optionally.

## **Drive**

The gearless, permanent magnet drive produces a smooth, high quality ride. It perfectly balances high performance with low energy consumption. Importantly for some applications it enables a high stopping accuracy. A well-proven component for high reliability.

## **Monitoring**

As an option remote monitoring can be installed to increase reliability over the long term. Control data is continuously transmitted to our headquarters and elevator is monitored 24 hours a day, 365 days a year. This allows to identify and replace worn parts to keep availability high.



Heavy duty interior materials



Well-proven high-quality components

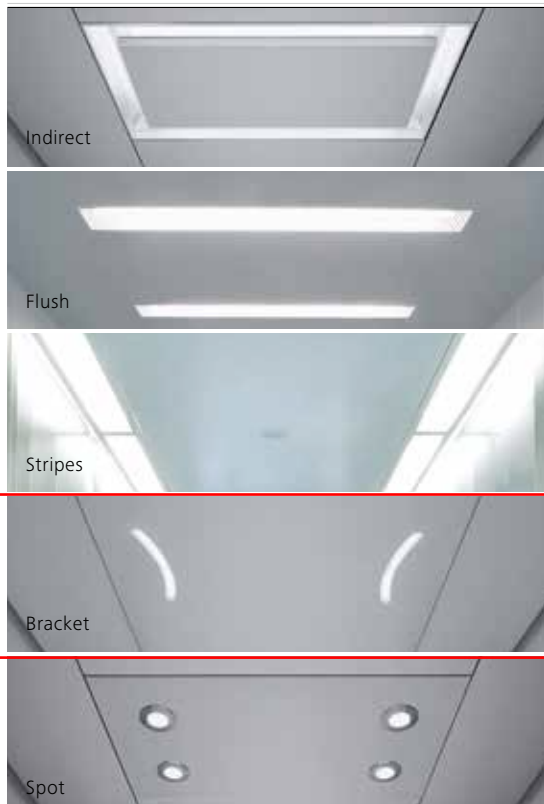


Ceiling: Flush  
Walls: Stainless steel brushed  
Floor: Aluminum checker plate  
Bumper rails: PVC

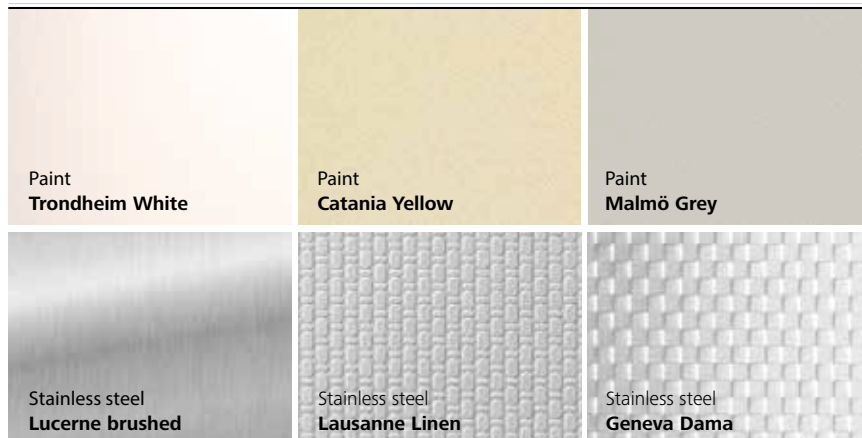


# Interior Design

## Lighting



## Ceiling



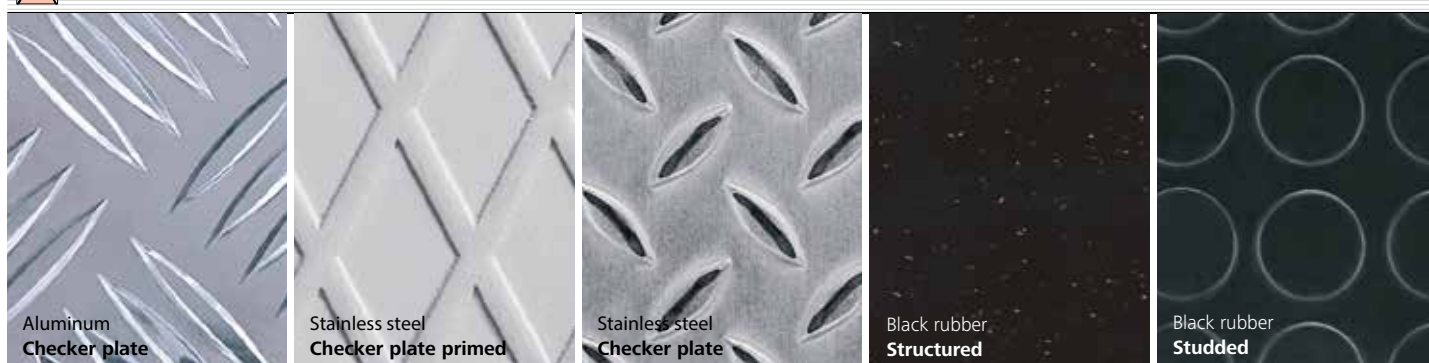
## Car door and front



## Walls\*



## Floor\*\*



### Note

Specifications, options, colors are subject to change. All cars and options represented in this brochure are representative only. The samples shown may vary from the original in color and material.

\* Paint - all RAL colors available on commission \*\* Local floor and stone on commission

# Fixtures

## FI GS 100

Functional half height surface design in stainless steel. Integrated white glass display with large, easily readable red LED dot matrix. Clear push buttons with red call confirmation.

## FI GS 300

Full car height flush design. Modern and robust face plate in stainless steel, mirror polished or linen. Push buttons with clear white illumination and red call confirmation.

## Car operating panels

**1 FI GS 100 Car operating panel**  
surface

197 x 1052 mm

**2 FI GS 100 Car operating panel**  
with integrated key switch

197 x 1052 mm

**3 FI S 300 Car operating panel**

flush, full height

197 x 1942 mm

## Landing panels

**4 Landing indicating panel**

horizontal & vertical

65 x 290 mm

**5 Landing operating panel**

surface

65 x 160 mm

**6 Landing operating panel**

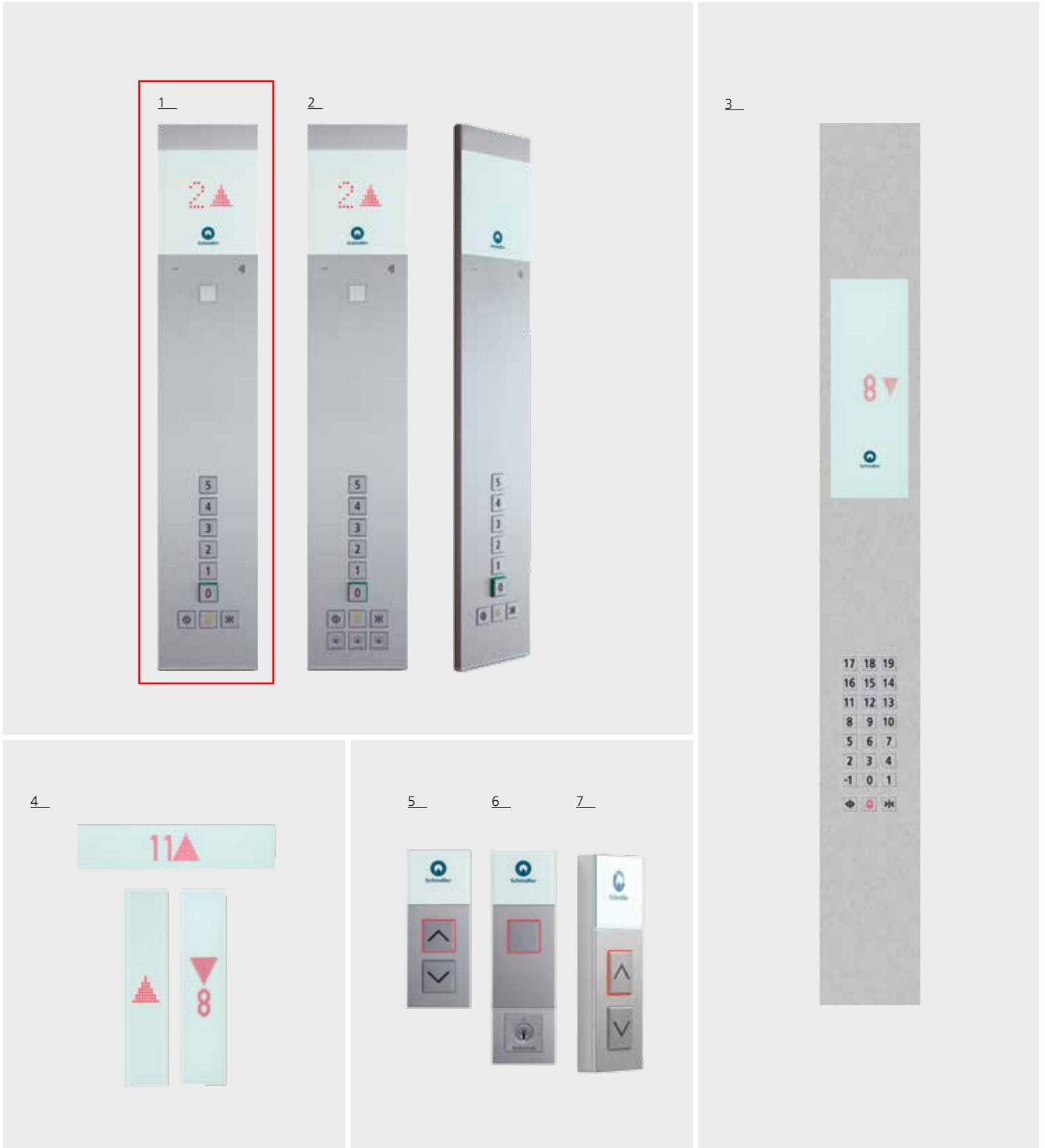
with key switch

65 x 225 mm

**7 Landing operating panel**

surface

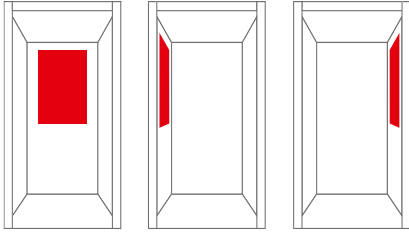
65 x 160 mm



# Features and options

## Mirrors

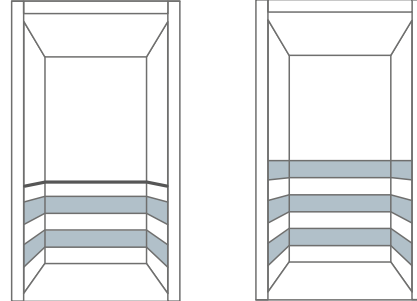
Mirrors always add a special sense of space to rooms and buildings. In order to give your car more appeal and depth, the side walls or the rear wall can be provided with a half-height safety-glass mirror.



## Bumper rails

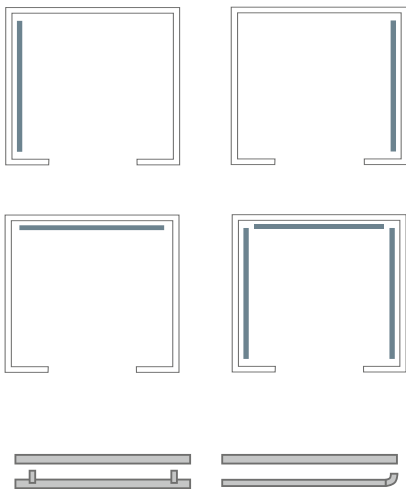
To protect your car wall from damage bumper rails can be mounted as an option. Available in stainless steel, PVC or wood.

- Two bumper rails with handrail
- Three bumper rails without handrail



## Handrails

Even though your elevator travels smoothly and with almost no sound, handrails provide a feeling of security. Stainless steel handrails match the interior and shapes of your car and can be mounted to the side and rear walls. Available in straight and revolving layout.



## Note

Specifications, options, colors are subject to change. All cars and options represented in this brochure are representative only. The samples shown may vary from the original in color and material.

# Planning data

## Specifications Schindler 2600

Traction elevator with frequency-controlled drive, capacity 1000–4000 kg, 13–53 passengers

GQ kg	Persons	VKN m/s	* <sup>1</sup> HQ m	ZE	* <sup>2</sup> PMN kW	* <sup>2</sup> INN A	Car			Doors			Shaft	
							* <sup>3</sup> BK mm	* <sup>3</sup> TK mm	* <sup>3</sup> HK mm	Type	* <sup>4</sup> BT mm	* <sup>4</sup> HT mm	HSG mm	HSK mm
1000	13	1.0	50	21	10.8	23	1000–1600	1400–2350	2000–2500	T2/C2/C4	900–1600	2000–2500	1500	HK + 1700
			1.6	65		18.9	31							1700
1275	17	1.0	50	21	11.1	29	1100–1800	1500–2650	2000–2500	T2/C2/C4	1000–1800	2000–2500	1500	HK + 1700
			1.6	65		16.1	36							1700
1600	21	1.0	25	21	11.5	30	1200–2100	1500–2900	2000–2500	T2/C2/C4	1100–2100	2000–2500	1500	HK + 1700
			1.6	25		17.4	39							1700
2000	26	1.0	25	21	15.3	39	1400–2300	1650–2950	2000–2500	T2/C2/C4/C6	1300–2300	2000–2500	1500	HK + 1700
			1.6	25		24.3	53							1700
2500	33	1.0	25	21	20.2	42	1400–2300	2050–3500	2000–2500	T2/C2/C4/C6	1300–2300	2000–2500	1600	HK + 1700
3000	39	1.0	24	21	23.3	48	1500–2300	2350–3800	2000–2500	C4/C6	1400–2300	2000–2500	1600	HK + 1700
3200	42	1.0	24	21	23.4	48	1700–2400	2350–3550	2000–2500	C4/C6	1600–2400	2000–2500	1600	HK + 1700
3500	46	1.0	24	21	25.4	52	1800–2400	2550–3600	2000–2500	C4/C6	1700–2400	2000–2500	1600	HK + 1700
4000	53	0.8	24	21	24.2	53	1800–2500	2800–4000	2000–2500	C4/C6	1700–2500	2000–2500	1600	HK + 1700

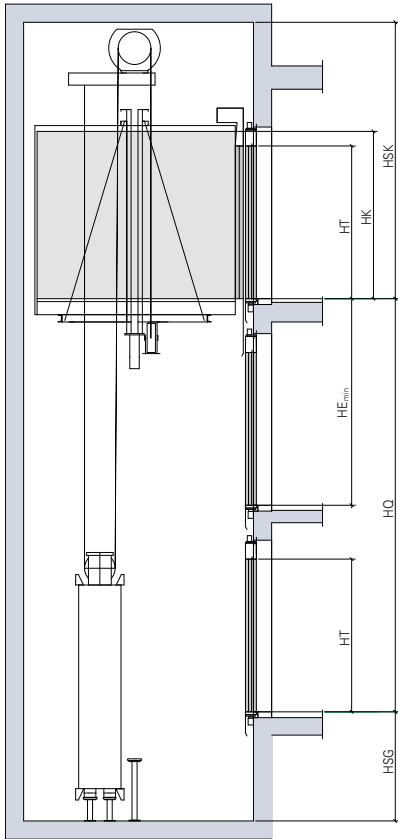
  

GQ	Load	BK	Car width	T2	Telescopic door, two-part	HSG	Shaft pit depth
VKN	Speed	TK	Car depth	C2	Center-opening telescopic door (two-part)	HSK	Clear over head below lifting beam
HQ	Travel height	HK	Car height	C4	Center-opening telescopic door (four-part)		
ZE	Number of stops			C6	Center-opening telescopic door (six-part)		
PMN	Nominal rating	* <sup>3</sup>	Car dimensions in 50-mm increments	BT	Door width		
INN	Nominal current			HT	Door height		
* <sup>1</sup>	Higher travel heights up to 50 meters on request			* <sup>4</sup>	Door dimensions in 100-mm increments		
* <sup>2</sup>	Maximum values						

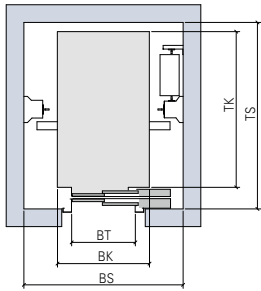
Max. number of entrances: 2, opposing  
 Number of rides: 180 per hour  
 Power supply: 400 V, optional 230 V

\* EU type examination in accordance with Lifts Directive (Directive 2014/33/EU), based on EN 81-20

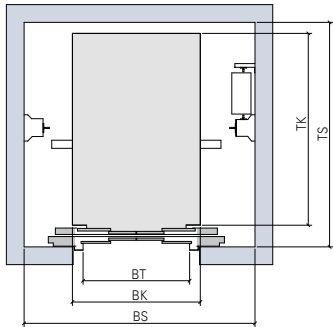
Height and plan view



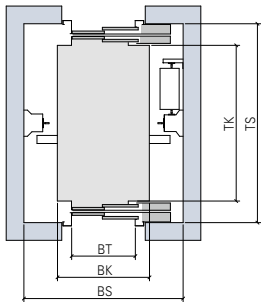
One-sided entrance



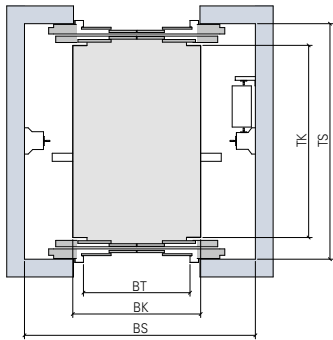
One-sided entrance  
Telescopic door



One-sided entrance  
Center-opening telescopic door (four-part)



Two-sided entrance  
Telescopic door



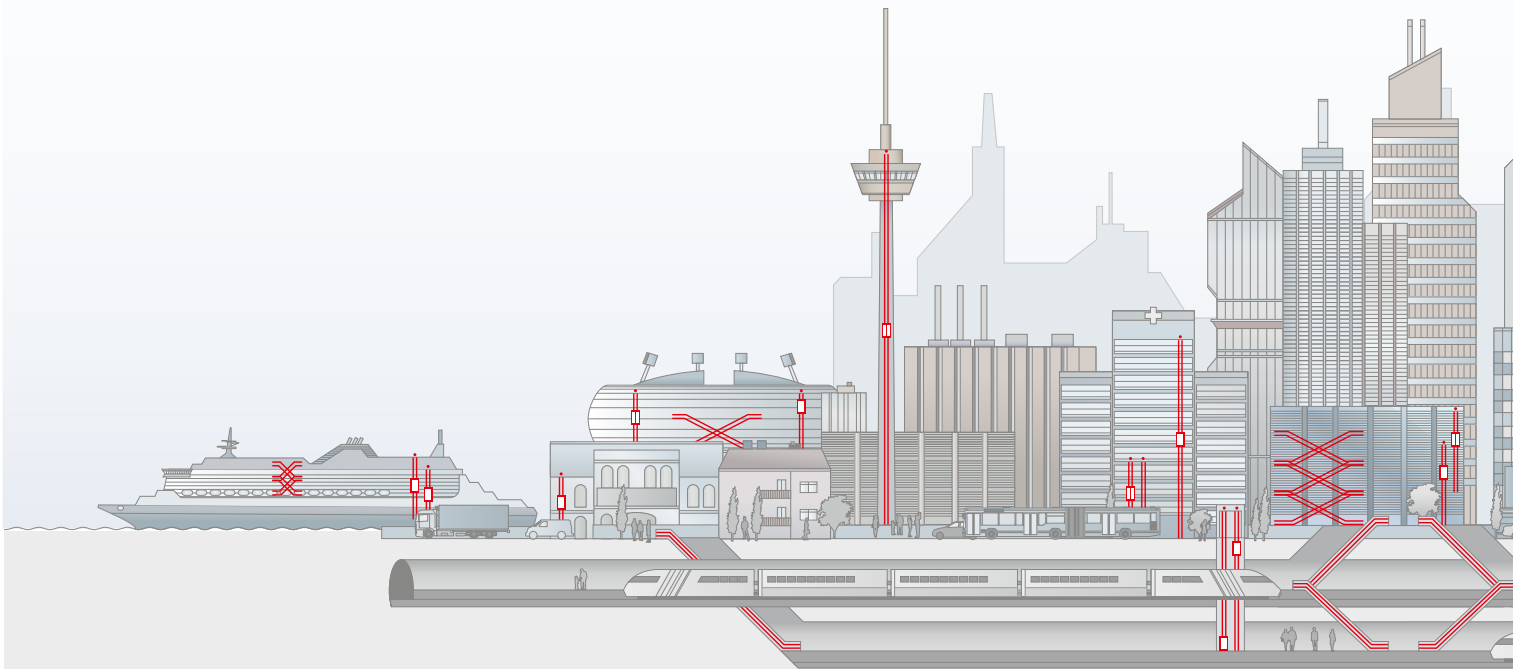
Two-sided entrance  
Center-opening telescopic door (four-part)



# From the subway to the skyline. Providing urban mobility.

Mobility is an essential requirement in the world in which we live and work. Schindler stands for urban mobility and is recognized as a hallmark of quality and safety. Daily, one billion people worldwide place their trust in Schindler products and services.

Schindler provides urban mobility with elevators, escalators and services that are engineered for efficiency and sustainability. Schindler accompanies the development of buildings from planning and construction to daily operation, thus safeguarding their lifetime value.



## Ingenious planning

Selecting the right mobility solution means to analyze the building requirements and to calculate the potential traffic patterns. This is at the core of Schindler's planning support to ensure efficient mobility and a convenient journey for passengers. Bringing together global know-how for each individual project.

Schindler planning services:

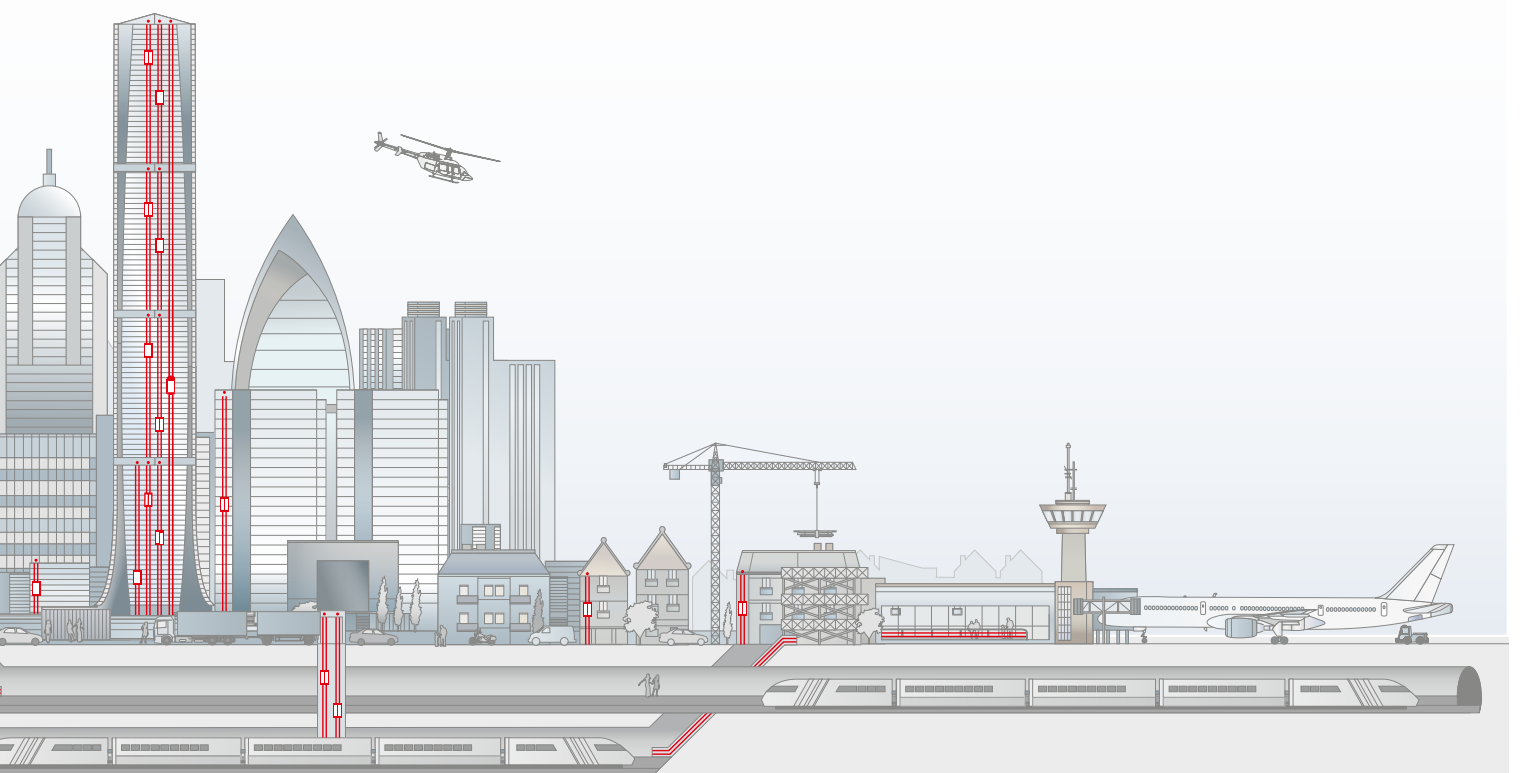
- Expert consultants for traffic and product planning
- Traffic analysis and calculation service
- Specialized engineering centers for customized configurations
- Planning guidelines and tools to expedite shaft planning, building layout and product selection/configuration

## Seamless delivery

With a full-range portfolio of elevators and escalators, Schindler provides mobility solutions for any building application. Schindler customers can rely on sustainable technology, excellent project management and profound installation methodologies. It's always the perfect fit.

Technology for all building types and mobility needs:

- Residential and office buildings
- Commercial towers, retail environments
- Hospitals and public buildings
- Heavy-traffic environments
- High-rise buildings
- Cruise liners



## Efficient operation

Smooth, hassle-free operation and very high availability are the result of professional maintenance and modernization. Environmental and operational efficiency add value to the investment. Reliability and sustainability – every day, all day.

The maintenance, repair and modernization portfolio:

- Global network of branches and service points
- Skilled and certified technicians and fitters
- Service solutions for all building types and requirements
- Availability and fast delivery of spare parts
- Quick responding call-center services
- E-monitoring diagnostic tools
- Replacement and step-by-step modernization solutions

## Continuous enhancement

Schindler constantly develops new products and features to set standards and increase efficiency. Technological milestones that provide mobility to the urban society – conveniently, safely and ecologically. Progress needs innovation.

The cutting-edge developments:

- PORT Technology – traffic, building communication and access-control management that calculates the swiftest route in the building
- Schindler regenerative PF1 clean drive technology
- Space-saving, weight-optimized designs
- Flexible modernization concepts from full replacements to partial retrofits
- Eco-mode options for escalators and elevators

# When vision meets discipline. Schindler partners with Solar Impulse.



Schindler is a main partner of **Solar Impulse**, the zero fuel airplane aiming to fly around the world propelled only by solar energy.

This publication is for general informational purposes only and we reserve the right at any time to alter the product design and specifications. No statement contained in this publication shall be construed as a warranty or condition, expressed or implied, as to any product, its fitness for any particular purpose, merchantability, quality or shall be interpreted as a term or condition of any agreement regarding the products or services contained in this publication. Minor differences between printed and actual colors may exist.